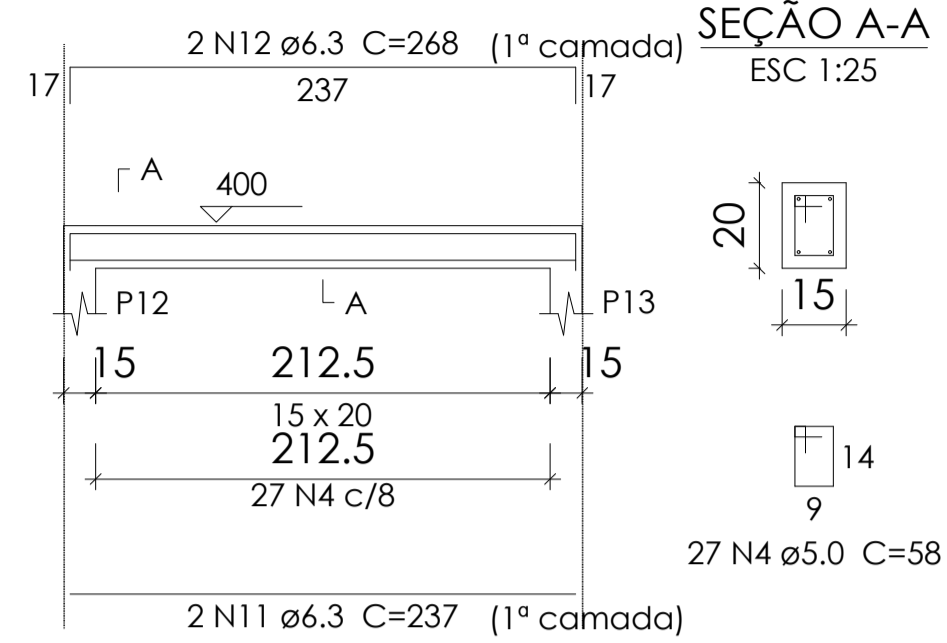
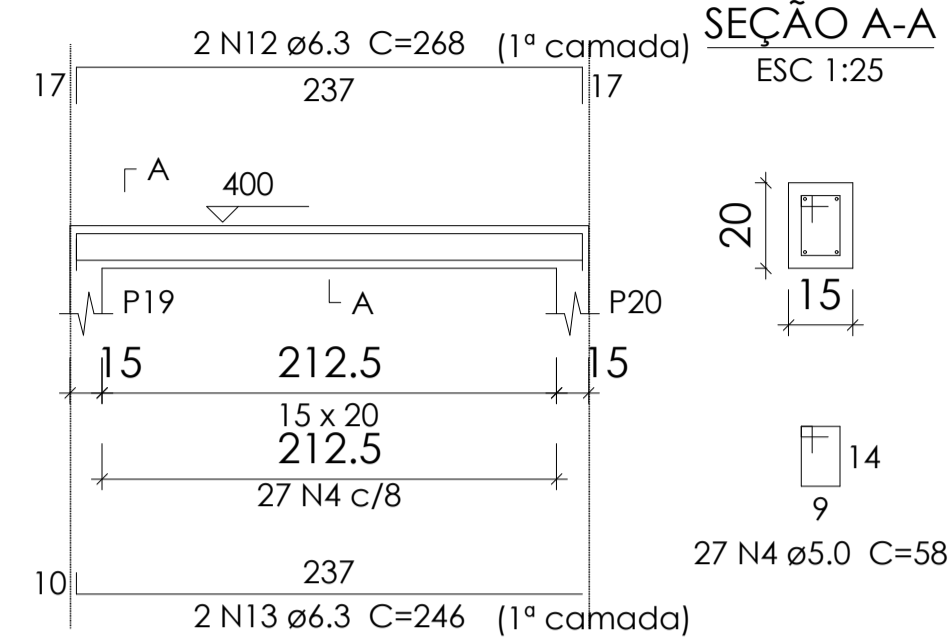


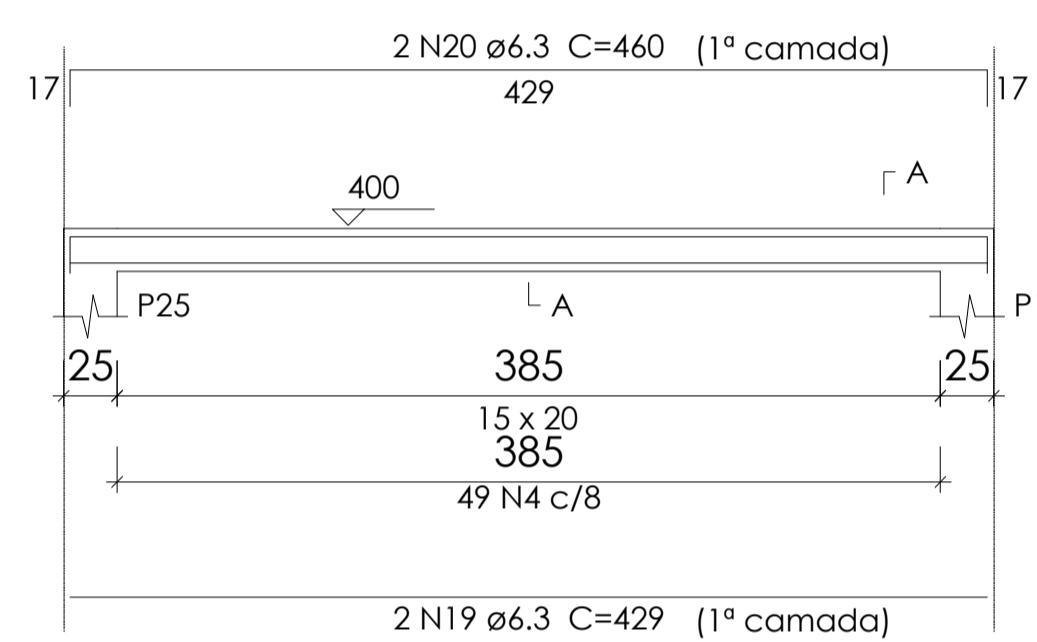
V2
ESC 1:50



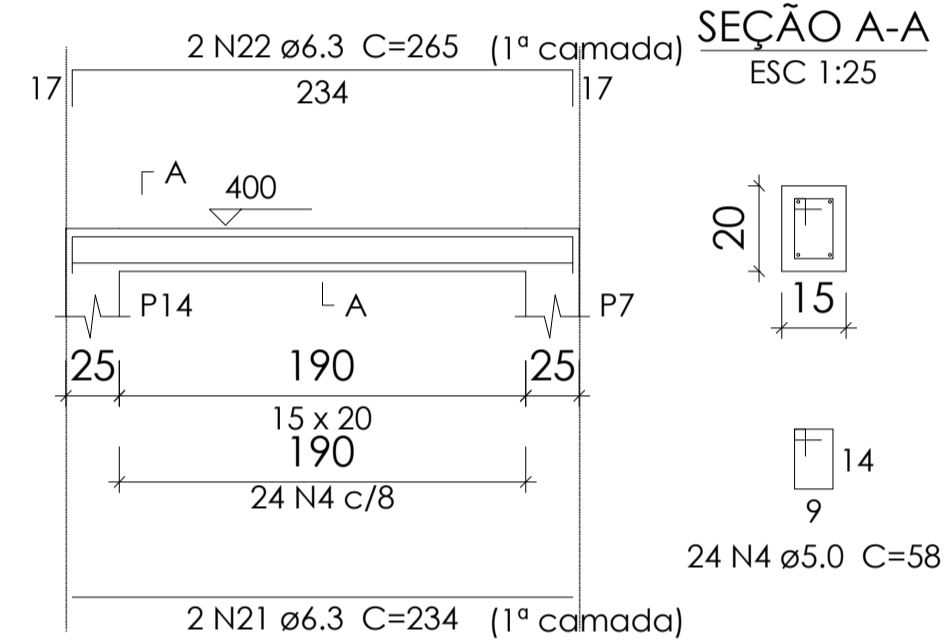
V3
ESC 1:50



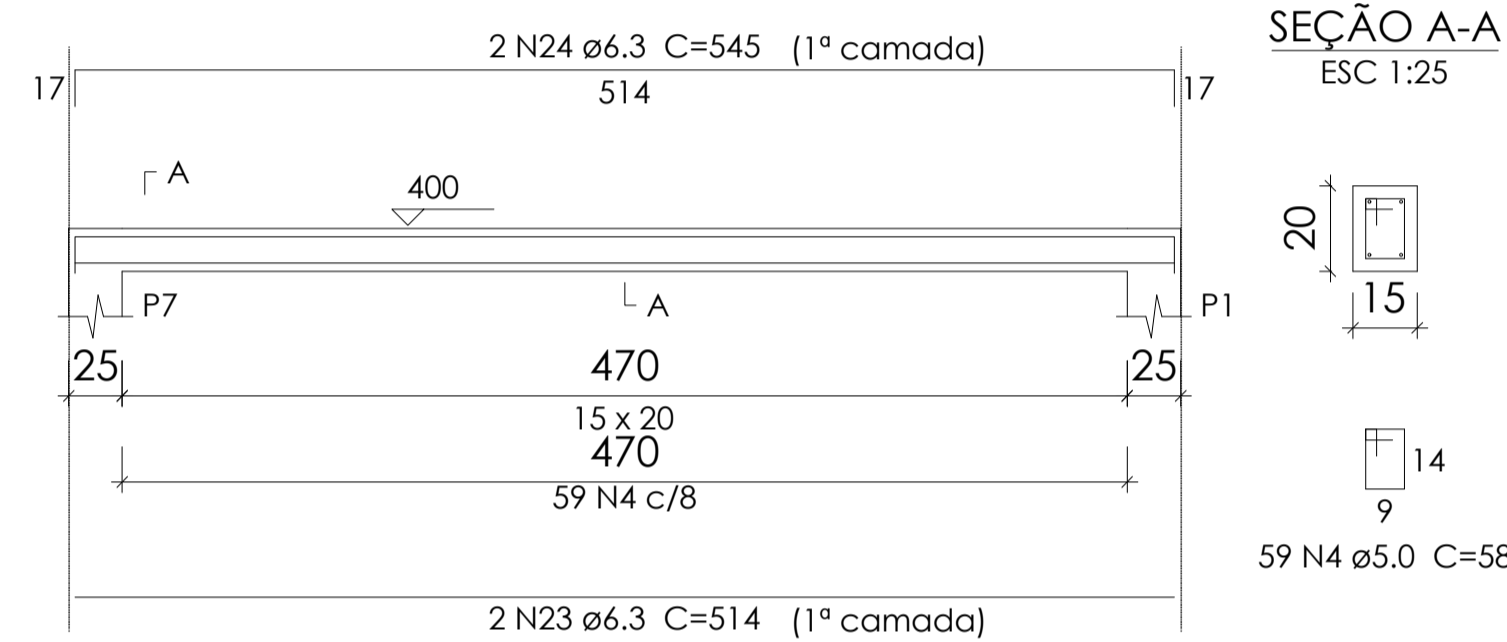
V5
ESC 1:50



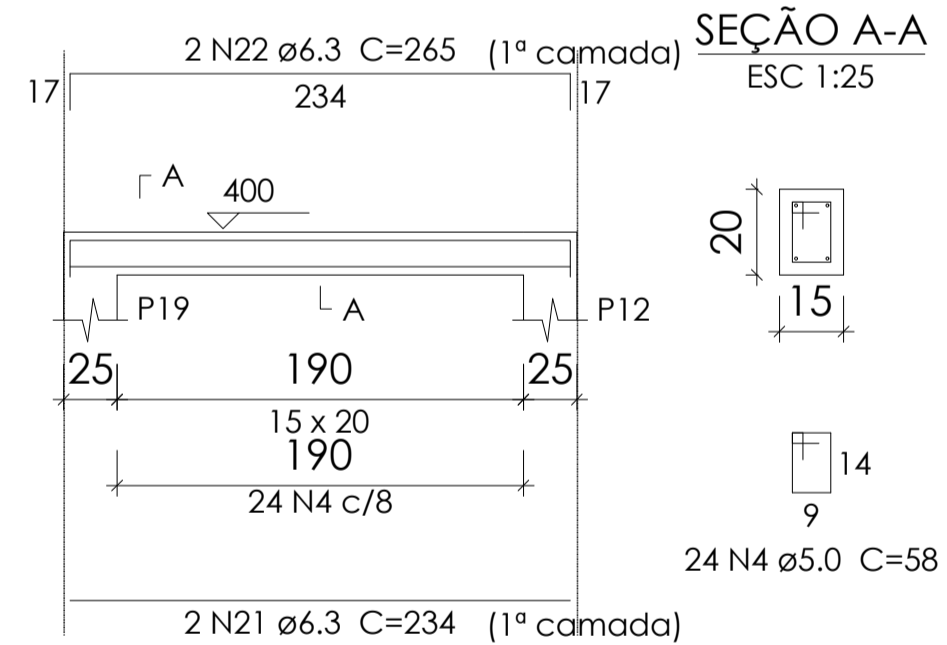
V6
ESC 1:50



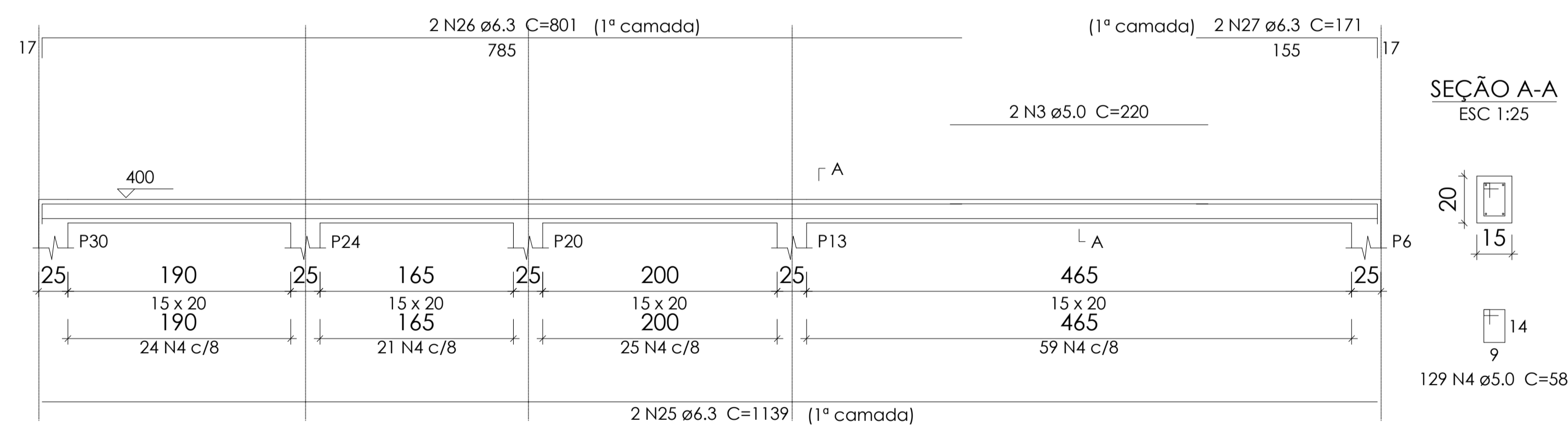
V7
ESC 1:50



V8
ESC 1:50



V9
ESC 1:50




Relação do aço

AÇO	N	DIAM	Q	UNIT (cm)	C.TOTAL (cm)
18xP1					
V2					
V3					
V5					
V8					
P28					
V3					
V4					
V6					
V7					
V9					
CA60	1	5.0	162	68	11016
	2	5.0	9	68	612
	3	5.0	4	220	880
	4	5.0	835	58	48430
CA50	5	5.0	2	320	640
	6	6.3	2	1170	2340
	7	6.3	2	890	1780
	8	6.3	2	1199	2398
	9	6.3	2	587	1174
	10	6.3	2	136	272
	11	6.3	2	237	474
	12	6.3	4	268	1072
	13	6.3	2	246	492
	14	6.3	2	737	1474
	15	6.3	2	978	1956
	16	6.3	2	350	700
	17	6.3	2	911	1822
	18	6.3	2	876	1752
	19	6.3	2	429	858
	20	6.3	2	460	920
	21	6.3	4	234	468
	22	6.3	4	265	530
	23	6.3	2	514	1028
	24	6.3	2	545	1090
	25	6.3	2	1139	2278
	26	6.3	2	801	1602
	27	6.3	2	171	342
	28	10.0	76	97	7372

Resumo do aço

AÇO	DIAM	C.TOTAL (m)	PESO + 10 % (kg)
CA50	6.3	278.2	74.9
CA60	10.0	73.8	50
CA60	5.0	615.8	104.4
PESO TOTAL			
CA50		124.9	
CA60		104.4	

Vol. de concreto total (C-25) = 2.87 m³
Área de forma total = 54.72 m²



**PREFEITURA MUNICIPAL DE
PORTO DOS GAÚCHOS**

<p>PROJETO: Construção UDR</p> <p>ENDEREÇO: Prefeitura Municipal - Praça Leopoldina Wilke</p> <p>PROPRIETÁRIO: MUNICÍPIO DE PORTO DOS GAÚCHOS</p>	<p>DATA 03/09/2020</p> <p>FOLHA Est17-17</p>
<p>RESPONSÁVEL TÉCNICO EVELIN LUANI MONTAGNA ENGENHEIRA CIVIL CREA-MT 03125</p>	<p>PROPRIETÁRIO PREFEITURA MUNICIPAL DE PORTO DOS GAÚCHOS CNPJ: 03.204.187/0001-33</p>