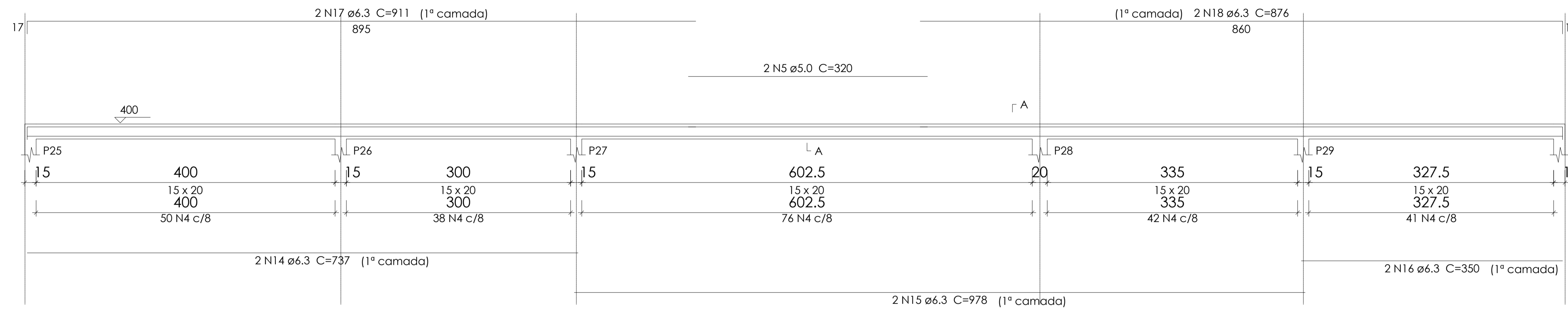
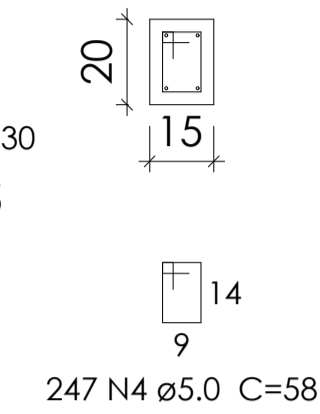


V4  
ESC 1:50

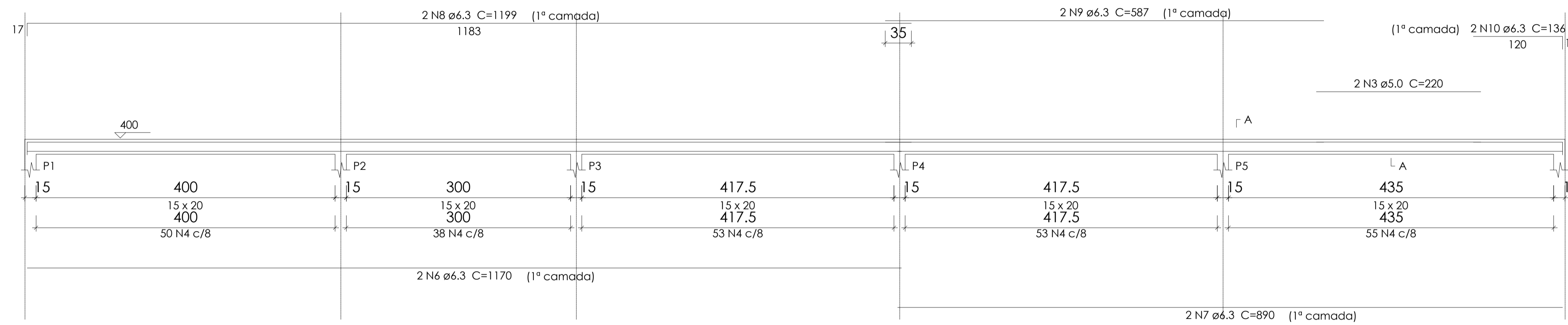


SEÇÃO A-A  
ESC 1:25

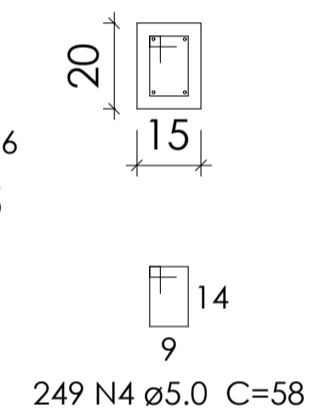


247 N4 ø5.0 C=58

V1  
ESC 1:50



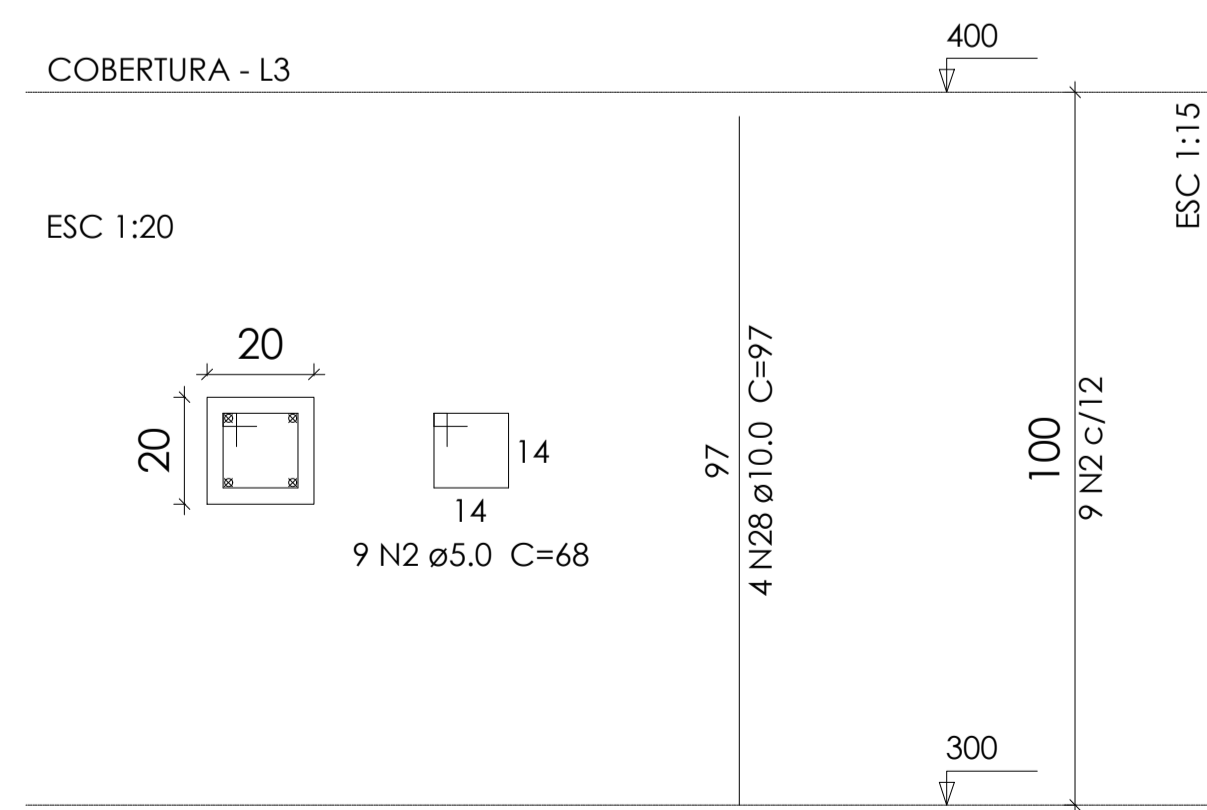
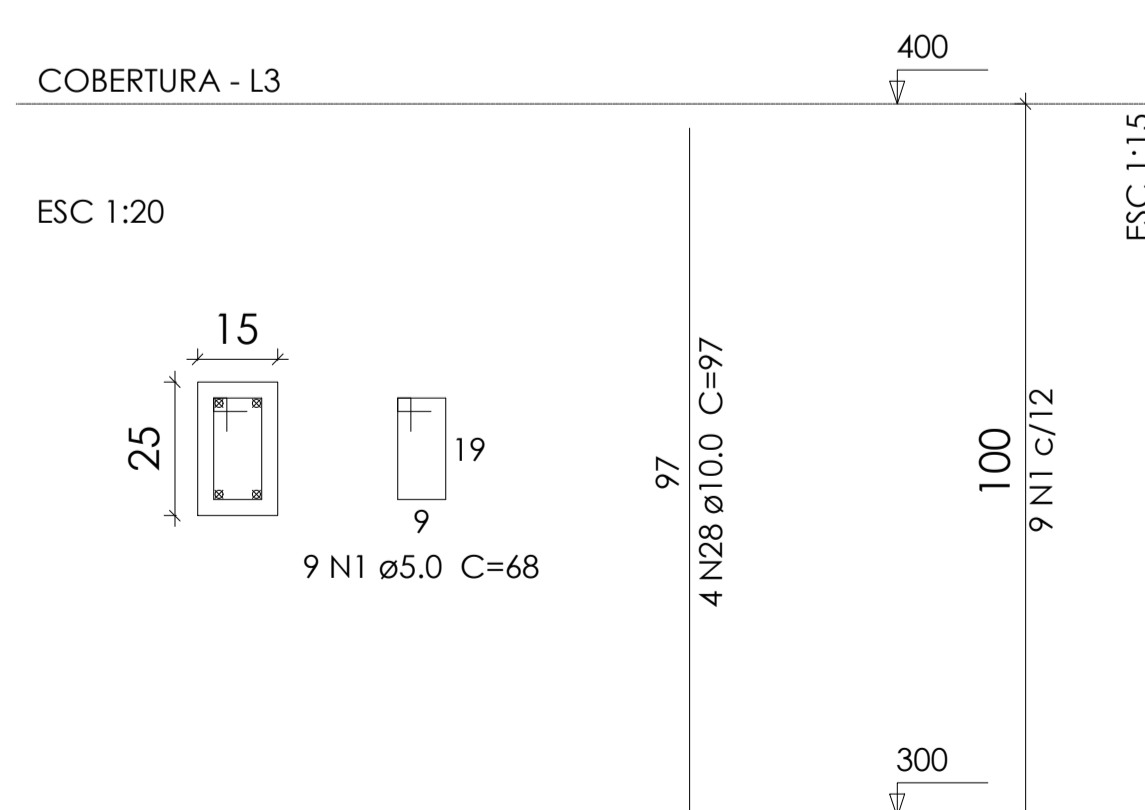
SEÇÃO A-A  
ESC 1:25




249 N4 ø5.0 C=58

P1=P2=P3=P4=P5=P6=P7=P12=P13=P14=P19  
=P20=P24=P25=P26=P27=P29=P30

P28



 <b>PREFEITURA MUNICIPAL DE PORTO DOS GAÚCHOS</b>	
<b>PROJETO:</b> Construção UDR <b>ENDEREÇO:</b> Prefeitura Municipal - Praça Leopoldina Wilke <b>PROPRIETÁRIO:</b> MUNICÍPIO DE PORTO DOS GAÚCHOS	<b>DATA:</b> 03/09/2020 <b>FOLHA:</b> Est16-17
RESPONSÁVEL TÉCNICO EVELIN LUANI MONTAGNA ENGENHEIRA CIVIL CREA-MT 03125	PROPRIETÁRIO PREFEITURA MUNICIPAL DE PORTO DOS GAÚCHOS CNPJ: 03.204.187/0001-33