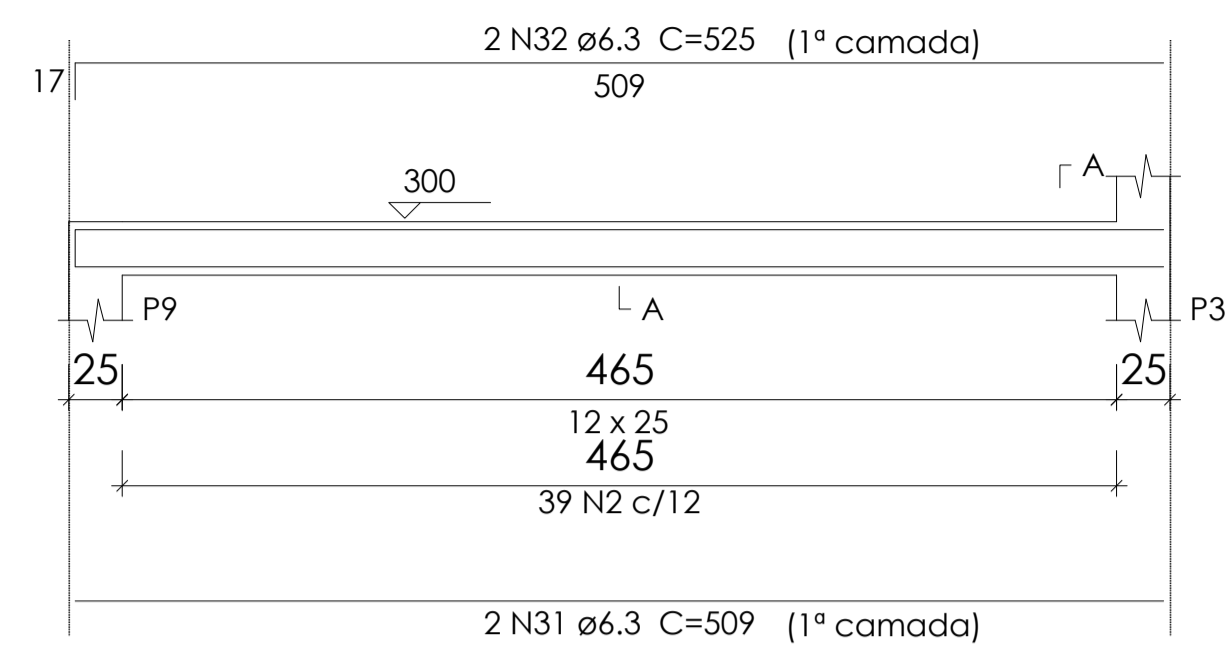


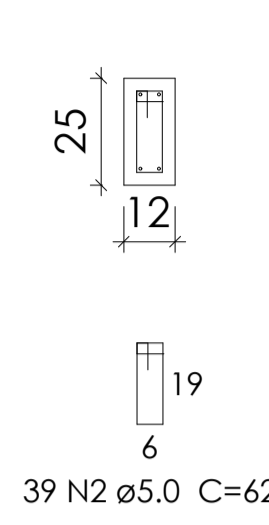
V13

ESC 1:50



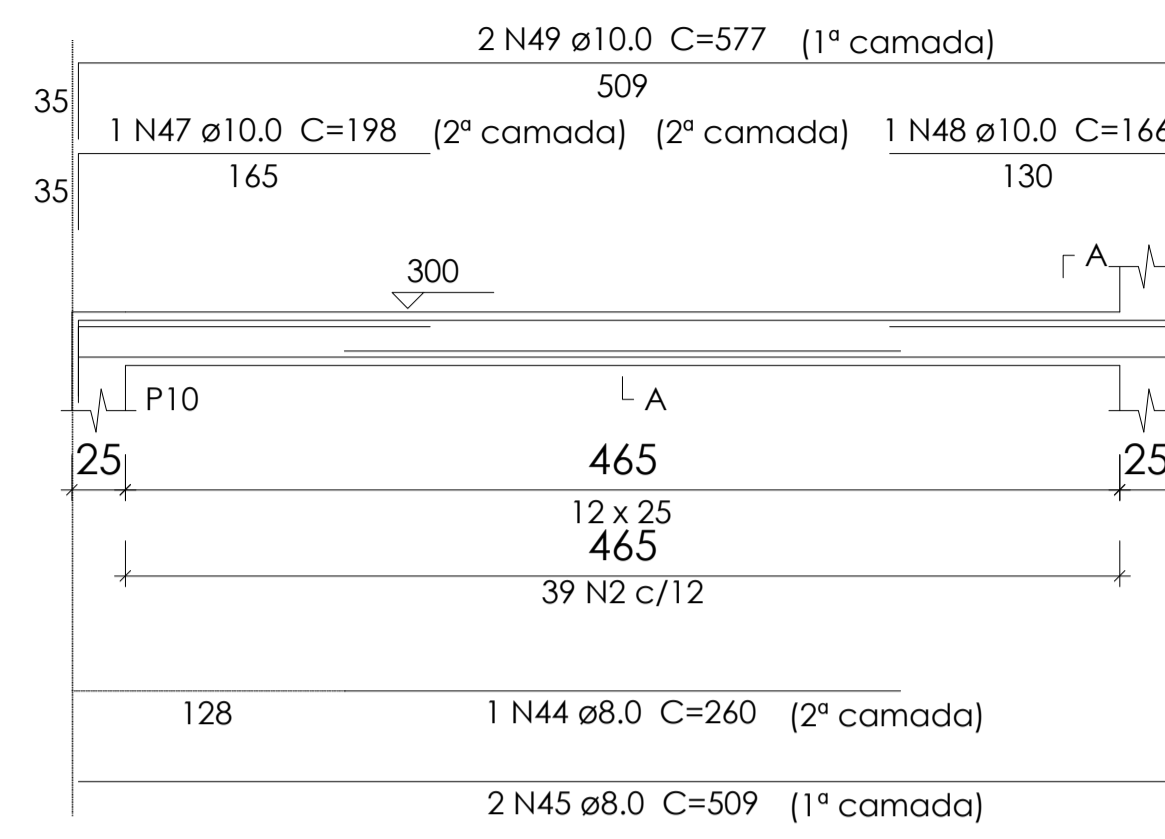
SEÇÃO A-A

ESC 1:25



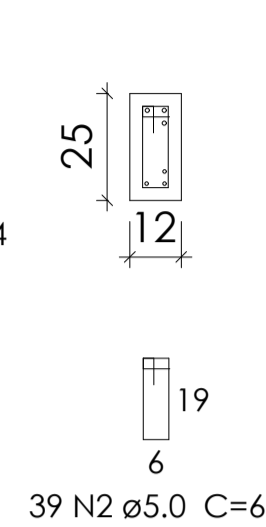
V14

ESC 1:50



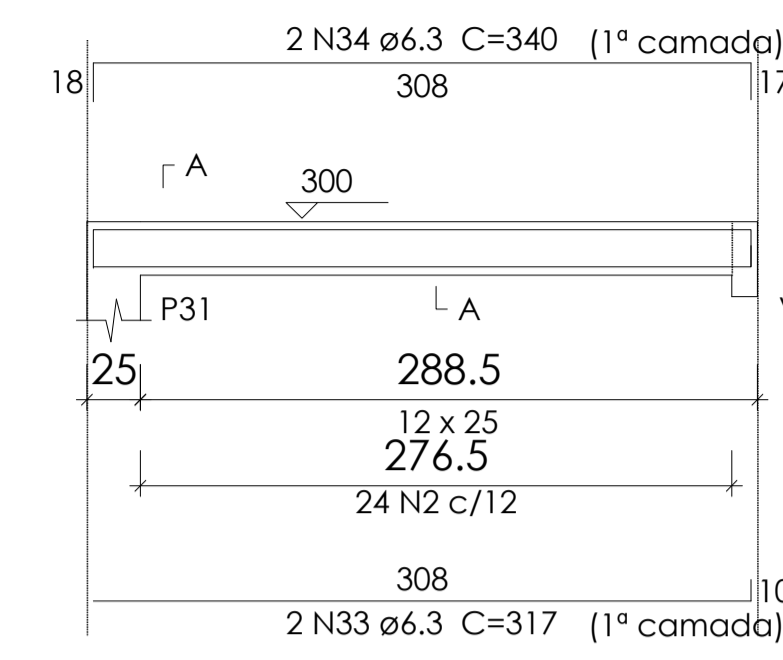
SEÇÃO A-A

ESC 1:25



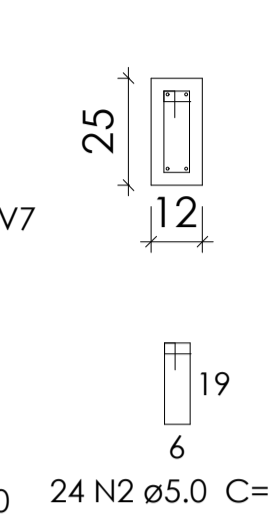
V15

ESC 1:50



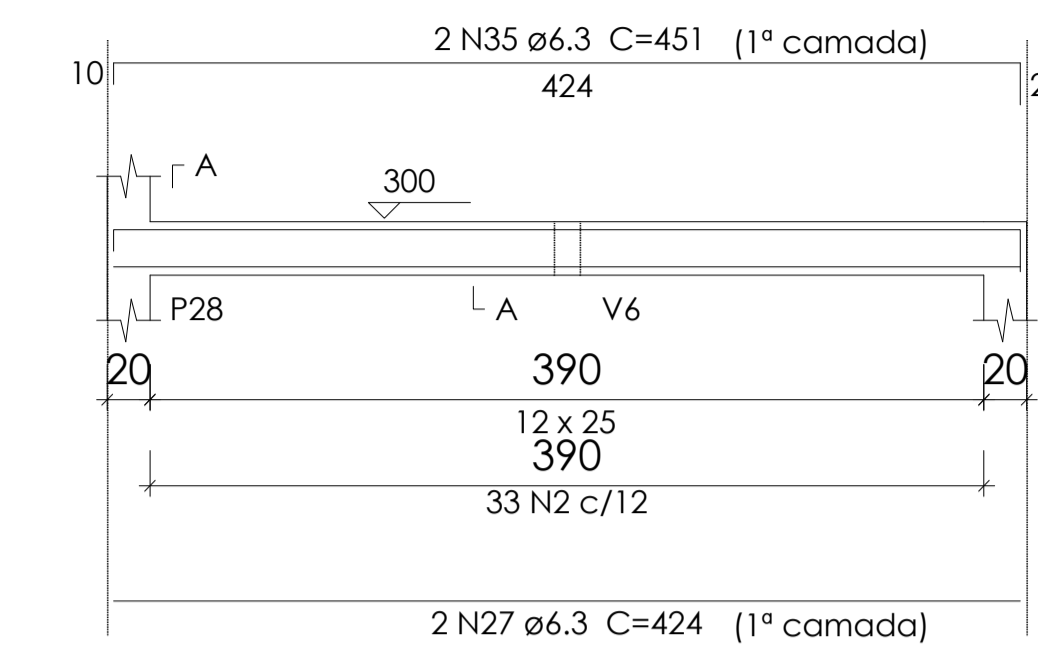
SEÇÃO A-A

ESC 1:25



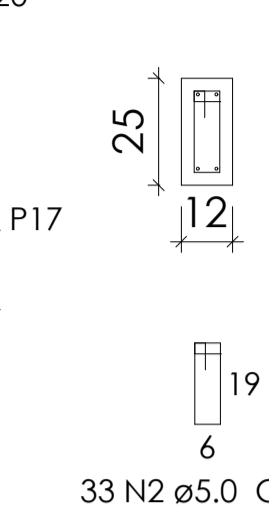
V16

ESC 1:50



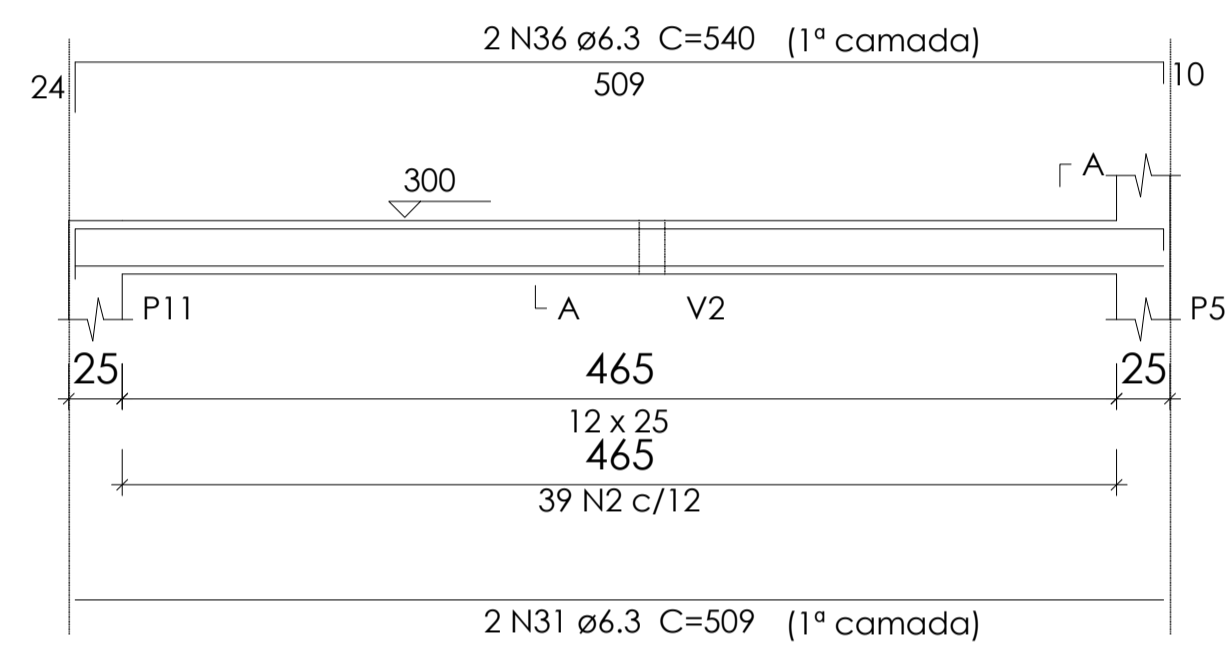
SEÇÃO A-A

ESC 1:25



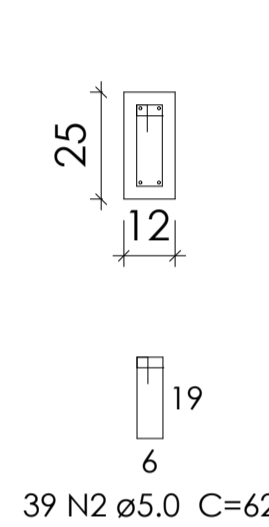
V17

ESC 1:50



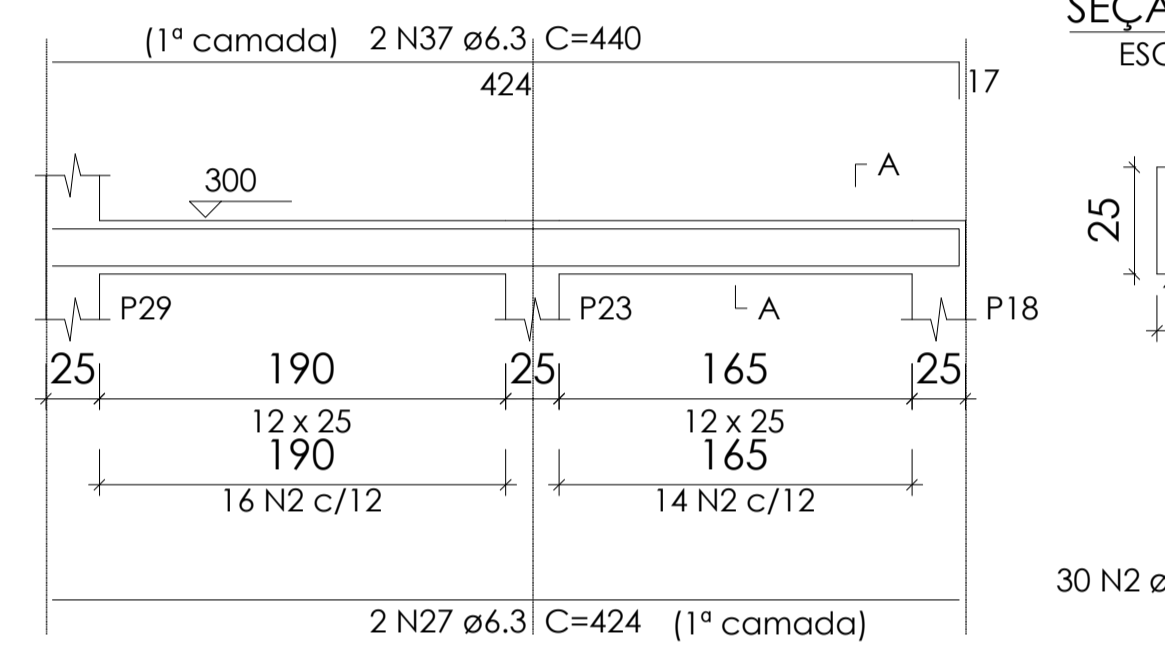
SEÇÃO A-A

ESC 1:25



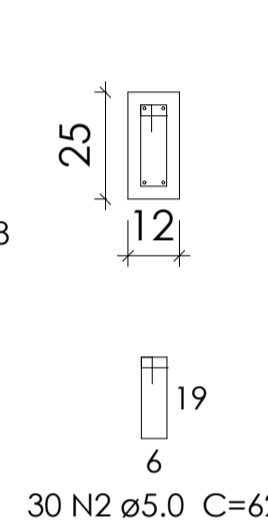
V18

ESC 1:50



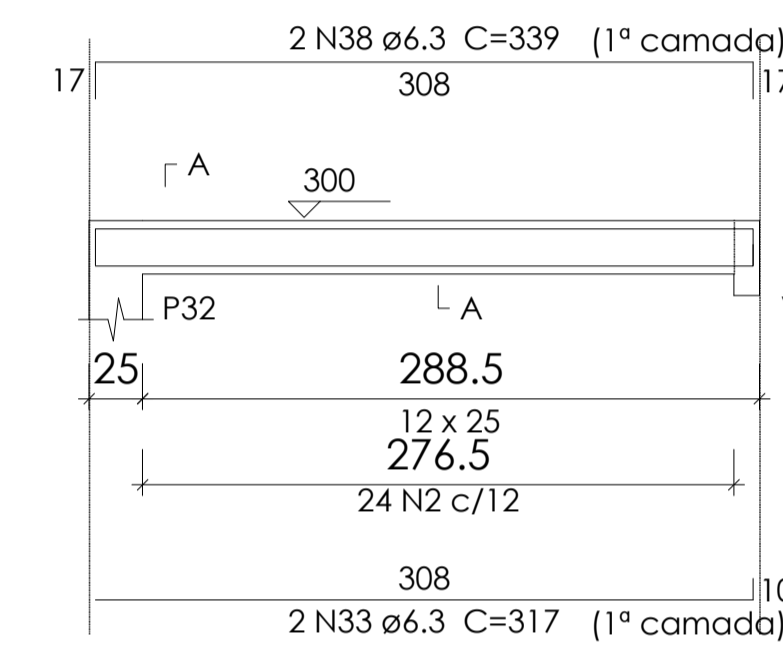
SEÇÃO A-A

ESC 1:25



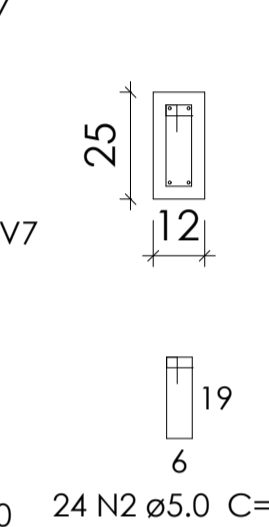
V19

ESC 1:50



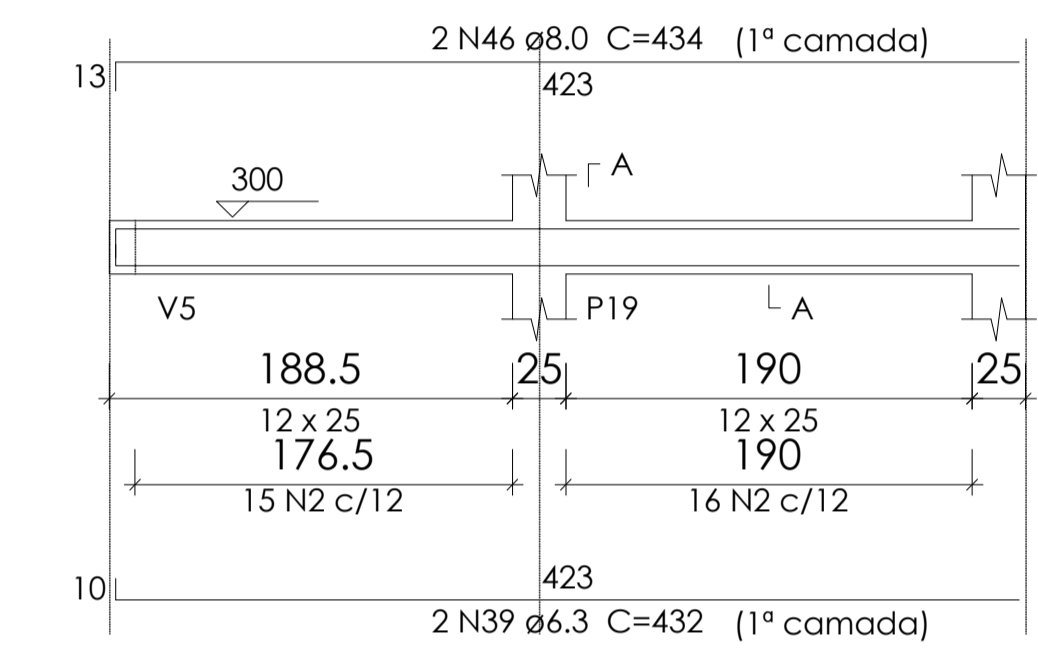
SEÇÃO A-A

ESC 1:25



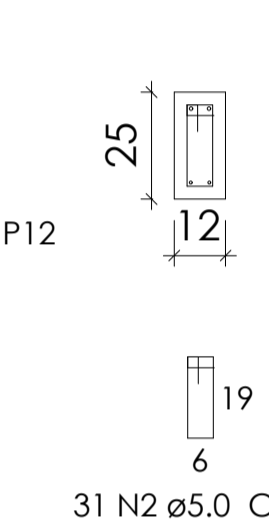
V20

ESC 1:50



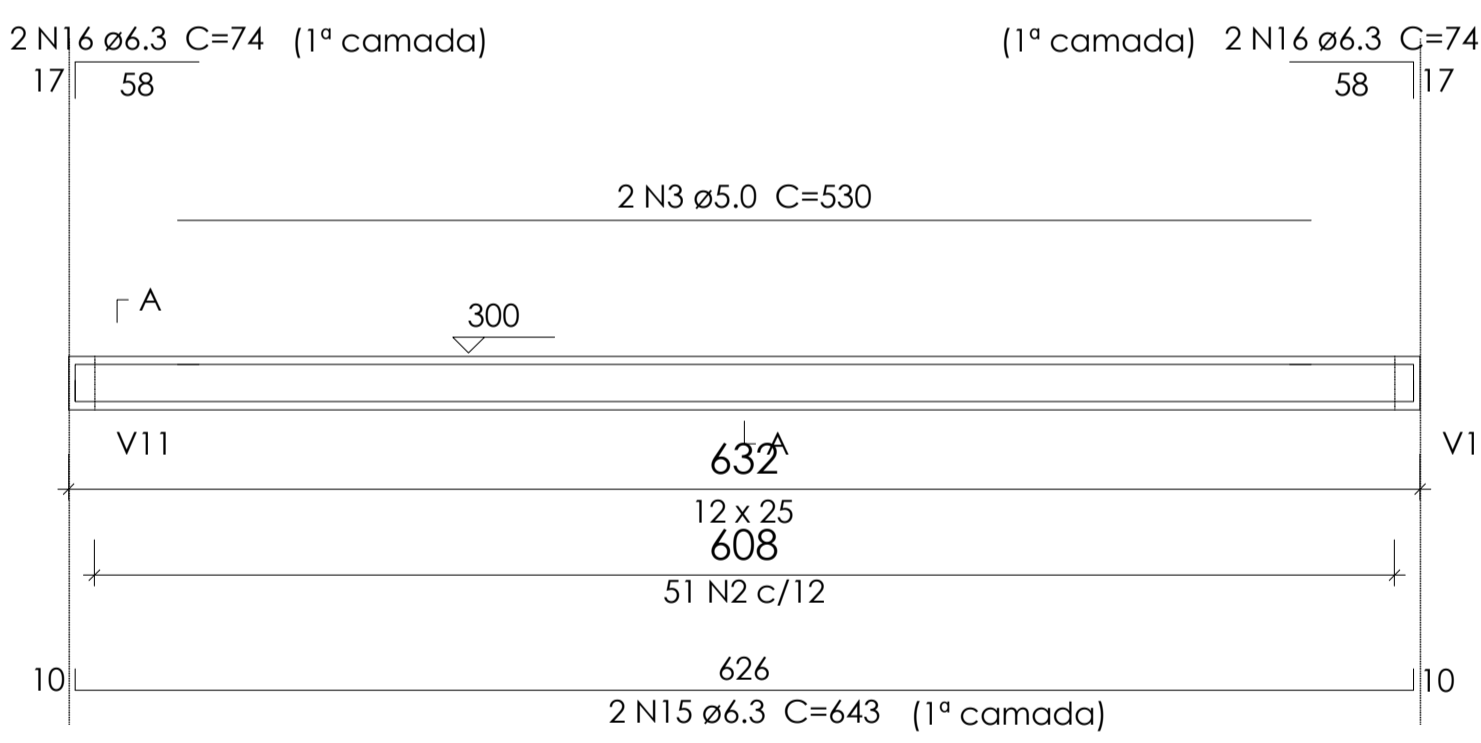
SEÇÃO A-A

ESC 1:25



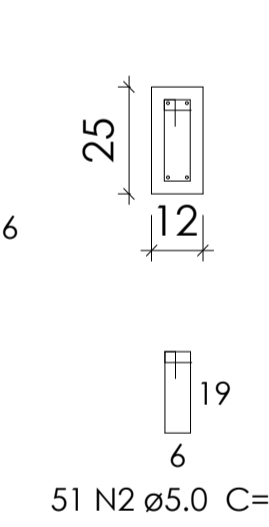
V6

ESC 1:50



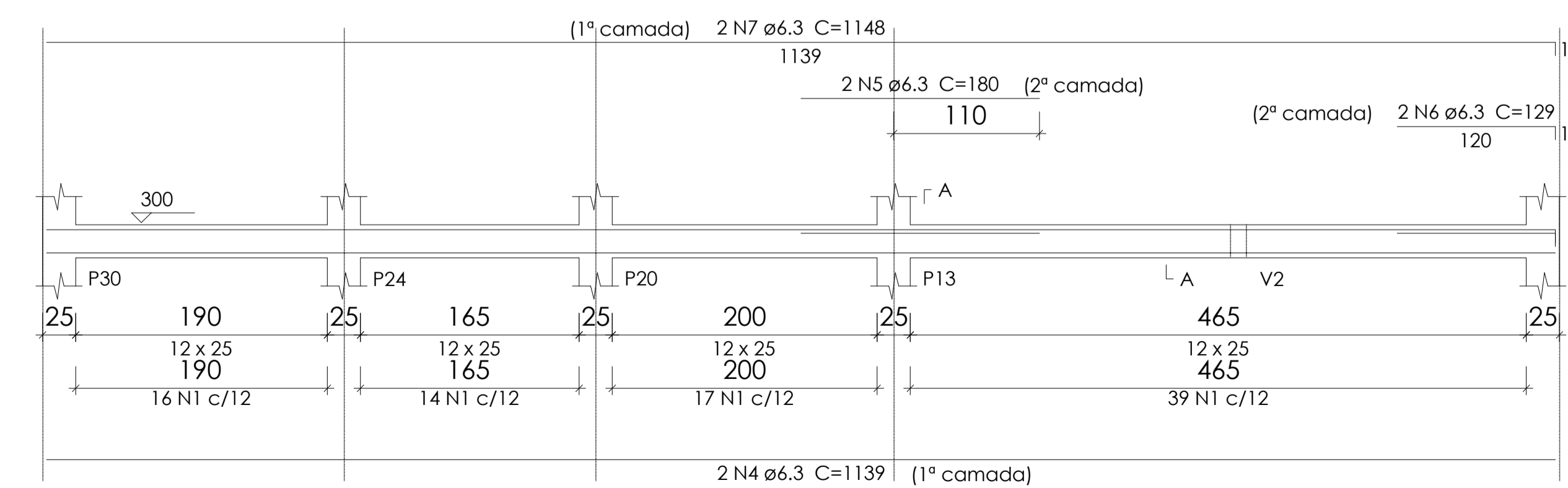
SEÇÃO A-A

ESC 1:25



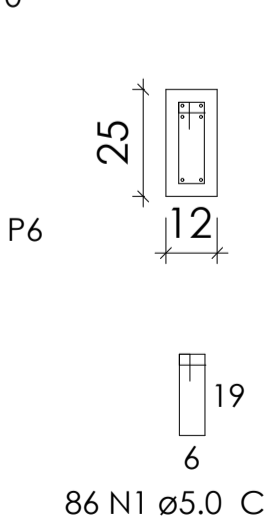
V21


ESC 1:50



SEÇÃO A-A

ESC 1:25



 PREFEITURA MUNICIPAL DE PORTO DOS GAÚCHOS	
PROJETO: Construção UDR ENDEREÇO: Prefeitura Municipal - Praça Leopoldina Wilke PROPRIETÁRIO: MUNICÍPIO DE PORTO DOS GAÚCHOS	DATA: 03/09/2020 FOLHA: Est13-17
RESPONSÁVEL TÉCNICO EVELIN LUANI MONTAGNA ENGENHEIRA CIVIL CREA-MT 03125	PROPRIETÁRIO PREFEITURA MUNICIPAL DE PORTO DOS GAÚCHOS CNPJ: 03.204.187/0001-33