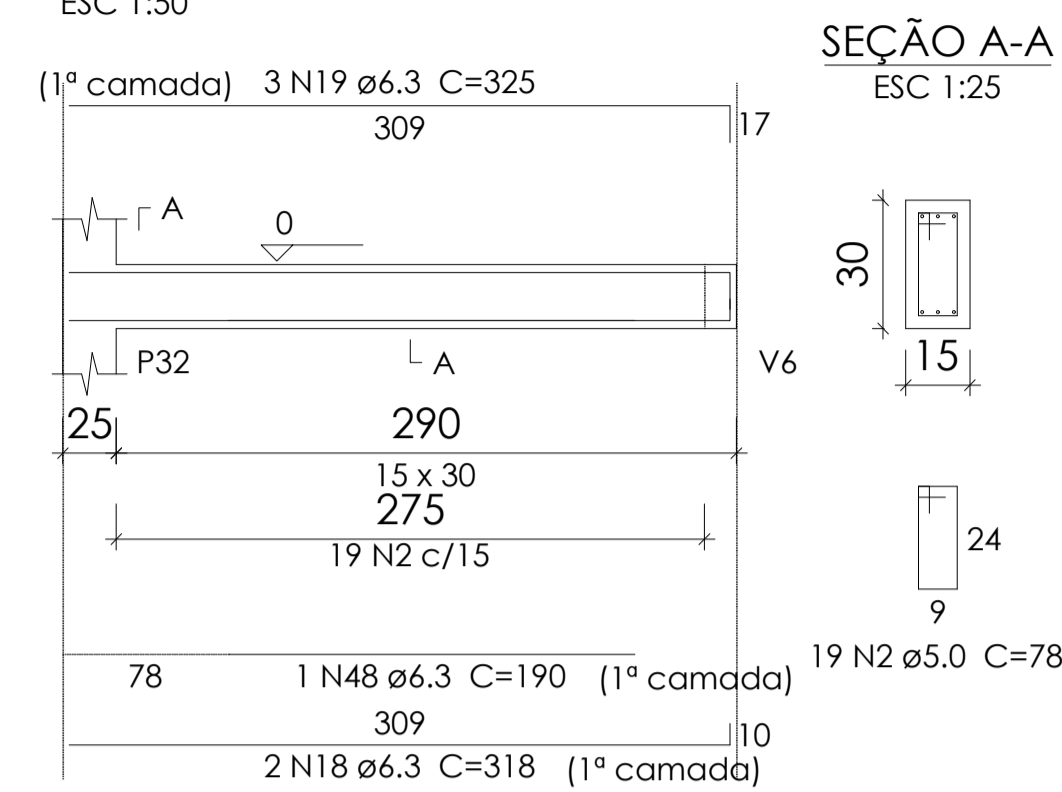


Relação do aço

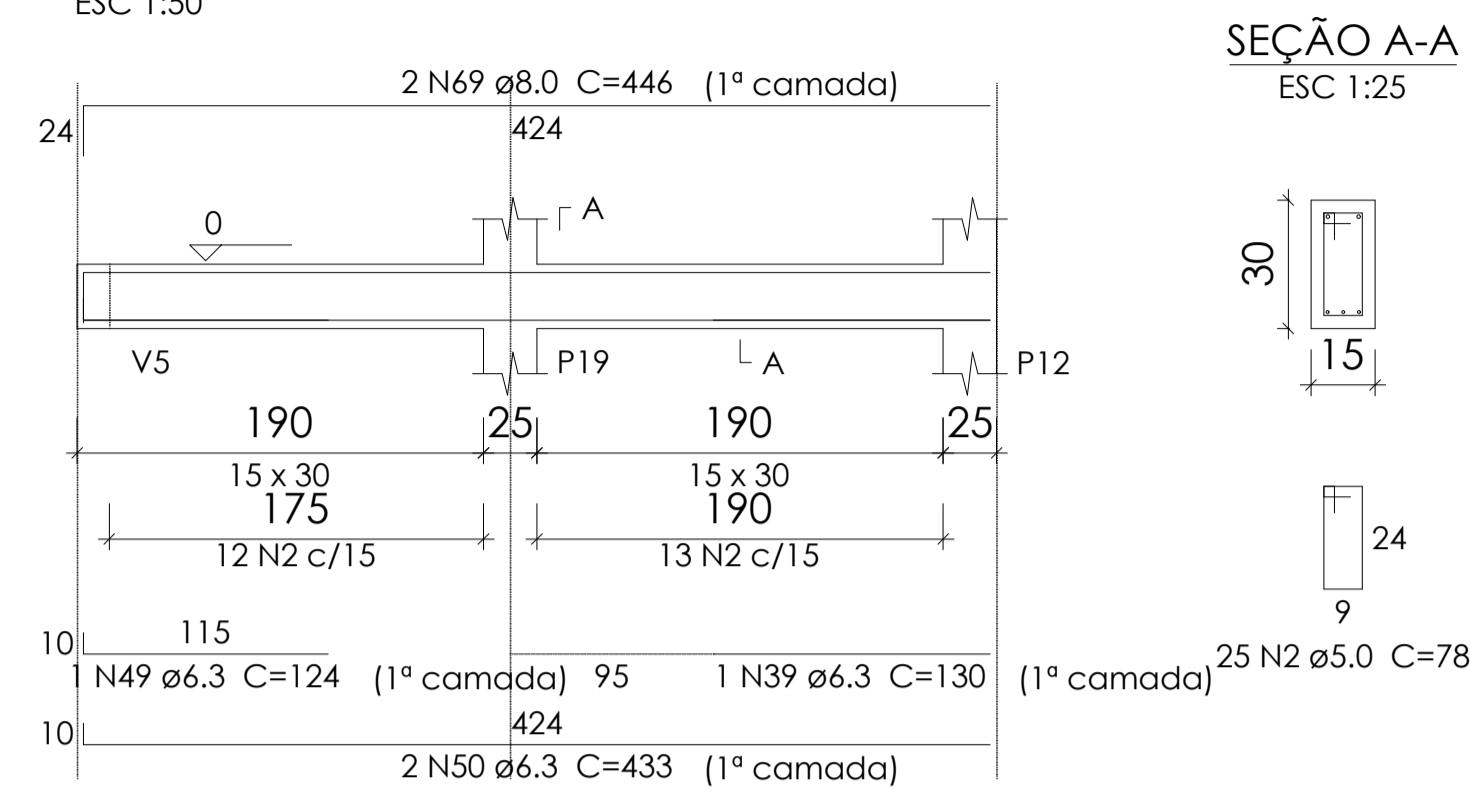
V1 V2 V3
 V4 V5 V6
 V7 V11 V12
 V13 V14 V15
 V16 V17

AÇO	N	DIAM	Q	UNIT (cm)	C.TOTAL (cm)
CA60	1	5.0	2	190	380
	2	5.0	679	78	52962
	3	5.0	2	330	660
	4	5.0	25	88	2200
	5	5.0	2	105	210
	6	5.0	2	235	470
	7	5.0	2	98	196
	8	5.0	2	290	580
	9	5.0	2	133	266
	10	5.0	22	98	2156
CA50	11	6.3	1	145	145
	12	6.3	3	203	609
	13	6.3	1	198	198
	14	6.3	2	1185	2370
	15	6.3	1	96	96
	16	6.3	3	156	468
	17	6.3	1	205	205
	18	6.3	4	318	1272
	19	6.3	6	325	1950
	20	6.3	1	165	165
	21	6.3	2	1187	2374
	22	6.3	1	103	103
	23	6.3	1	153	153
	24	6.3	2	457	914
	25	6.3	1	193	193
	26	6.3	2	352	704
	27	6.3	1	293	293
	28	6.3	2	522	1044
	29	6.3	5	94	470
	30	6.3	2	539	1078
	31	6.3	1	160	160
	32	6.3	2	329	658
	33	6.3	1	143	143
	34	6.3	1	84	84
	35	6.3	1	148	148
	36	6.3	4	700	2800
	37	6.3	1	416	416
	38	6.3	2	436	872
	39	6.3	2	130	260
	40	6.3	2	318	636
	41	6.3	1	158	158
	42	6.3	1	183	183
	43	6.3	3	121	363
	44	6.3	1	91	91
	45	6.3	1	175	175
	46	6.3	1	125	125
	47	6.3	5	424	2120
	48	6.3	1	190	190
	49	6.3	1	124	124
	50	6.3	2	433	866
	51	8.0	4	422	1688
	52	8.0	2	457	914
	53	8.0	1	270	270
	54	8.0	1	365	365
	55	8.0	2	459	918
	56	8.0	4	97	388
	57	8.0	1	165	165
	58	8.0	1	200	200
	59	8.0	1	140	140
	60	8.0	2	1198	2396
	61	8.0	2	537	1074
	62	8.0	2	403	806
	63	8.0	2	509	1018
	64	8.0	2	139	278
	65	8.0	2	143	286
	66	8.0	2	525	1050
	67	8.0	2	432	864
	68	8.0	2	480	960
	69	8.0	2	446	892
	70	10.0	1	180	180
	71	10.0	2	1198	2396
	72	10.0	2	645	1290
	73	10.0	4	620	2480
	74	10.0	3	230	690
	75	10.0	4	375	1500
	76	10.0	2	200	400
	77	10.0	2	937	1874
	78	10.0	1	175	175
	79	10.0	1	235	235
	80	10.0	2	653	1306
	81	10.0	1	166	166
	82	12.5	2	509	1018
	83	12.5	1	178	178
	84	12.5	1	184	184
	85	12.5	2	586	1172

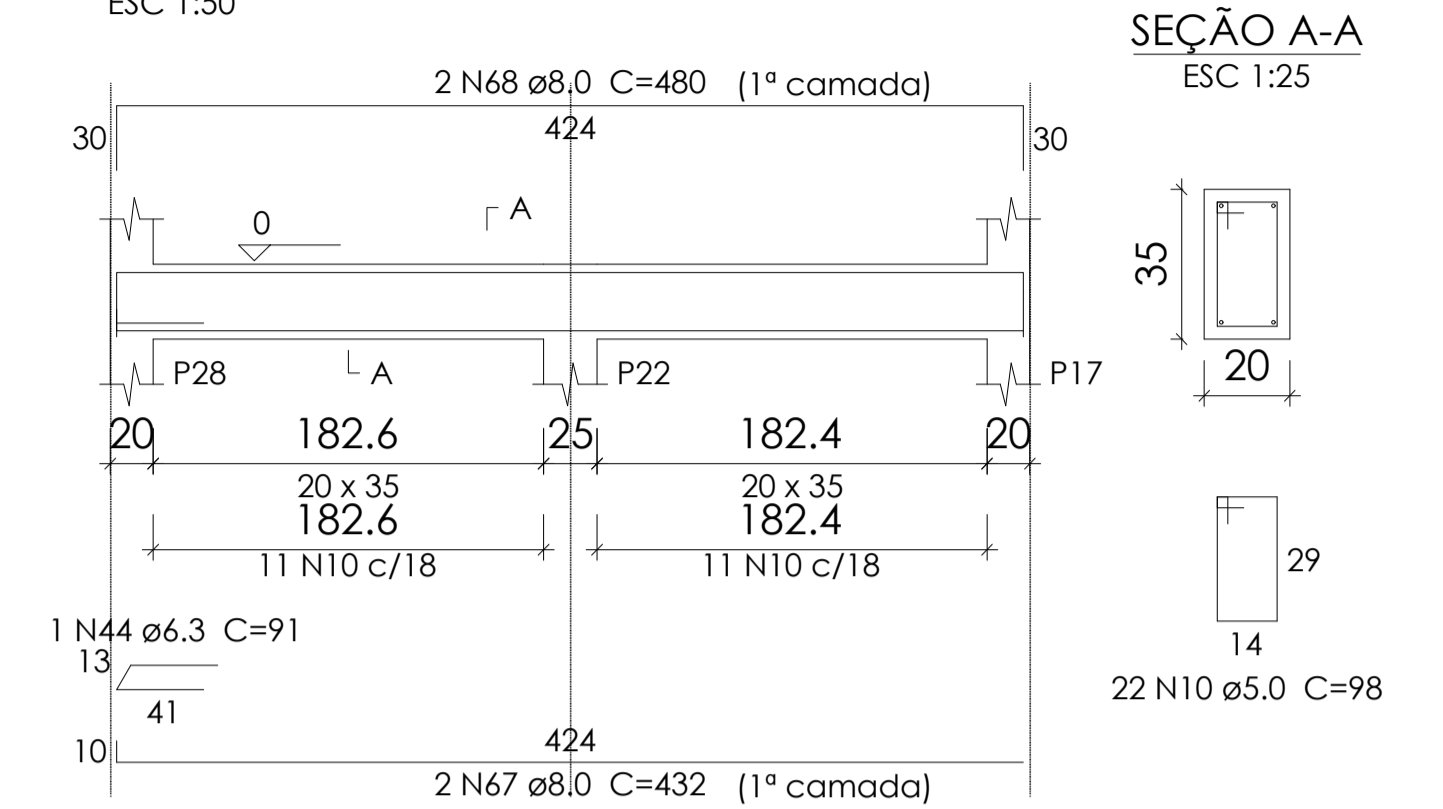
V16
 ESC 1:50



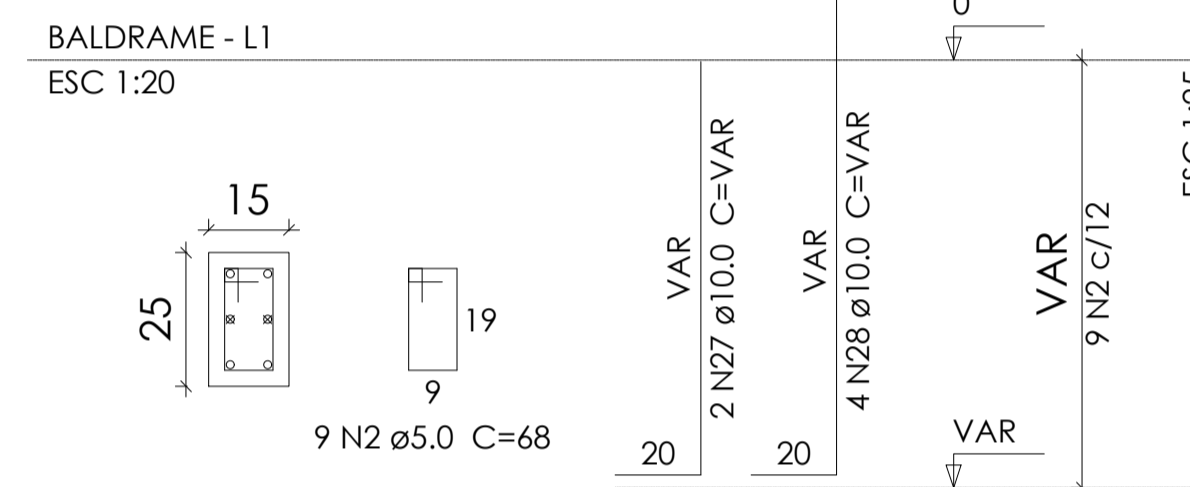
V17
 ESC 1:50



V13
 ESC 1:50



P1



Relação do aço

P1 20xP2 2xP4
 P5 P6 P11
 2xP16 2xP17 2xP21
 V8 V9 V10
 V18

AÇO	N	DIAM	Q	UNIT (cm)	C.TOTAL (cm)
CA60	1	5.0	211	78	16458
	2	5.0	234	68	15912
	3	5.0	2	235	470
	4	5.0	60	98	5880
	5	5.0	18	78	1404
	6	5.0	18	68	1224
	7	5.0	18	88	1584
CA50	8	6.3	1	210	210
	9	6.3	2	129	258
	10	6.3	4	632	2528
	11	6.3	1	205	205
	12	6.3	1	248	248
	13	6.3	1	255	255
	14	6.3	2	637	1274
	15	6.3	1	475	475
	16	6.3	2	525	1050
	17	8.0	4	502	2008
	18	8.0	2	180	360
	19	8.0	2	768	1536
	20	8.0	2	118	236
	21	8.0	1	168	168
	22	8.0	4	1155	4620
	23	8.0	1	178	178
	24	8.0	2	1147	2294
	25	8.0	2	190	380
	26	8.0	2	793	1586
	27	10.0	24	VAR	VAR
	28	10.0	126	VAR	VAR
	29	10.0	2	171	342
	30	10.0	1	200	200
	31	10.0	2	497	994
	32	10.0	1	166	166
	33	12.5	1	210	210
	34	12.5	1	177	177
	35	12.5	2	677	1354

Resumo do aço


AÇO	DIAM	C.TOTAL (m)	PESO + 10 % (kg)
CA50	6.3	253.8	68.3
	8.0	146.8	63.7
	10.0	127	86.1
	12.5	25.6	27
CA60	5.0	600.8	101.9
PESO TOTAL			
CA50	245.1		
CA60	101.9		

Vol. de concreto total (C-25) = 5.41 m³
 Área de forma total = 88.94 m²

Resumo do aço

AÇO	DIAM	C.TOTAL (m)	PESO + 10 % (kg)
CA50	6.3	65.1	17.5
	8.0	133.7	58
	10.0	241.2	163.6
	12.5	17.5	18.4
CA60	5.0	429.4	72.8
PESO TOTAL			
CA50	257.5		
CA60	72.8		

Vol. de concreto total (C-25) = 3.63 m³
 Área de forma total = 62.27 m²



PREFEITURA MUNICIPAL DE PORTO DOS GAÚCHOS

<p>PROJETO: Construção UDR</p> <p>ENDEREÇO: Prefeitura Municipal - Praça Leopoldina Wilke</p> <p>PROPRIETÁRIO: MUNICÍPIO DE PORTO DOS GAÚCHOS</p>		<p>DATA 03/09/2020</p> <p>FOLHA Est8-17</p>
<p>RESPONSÁVEL TÉCNICO EVELIN LUANI MONTAGNA ENGENHEIRA CIVIL CREA-MT 03125</p>		<p>PROPRIETÁRIO PREFEITURA MUNICIPAL DE PORTO DOS GAÚCHOS CNPJ: 03.204.187/0001-33</p>