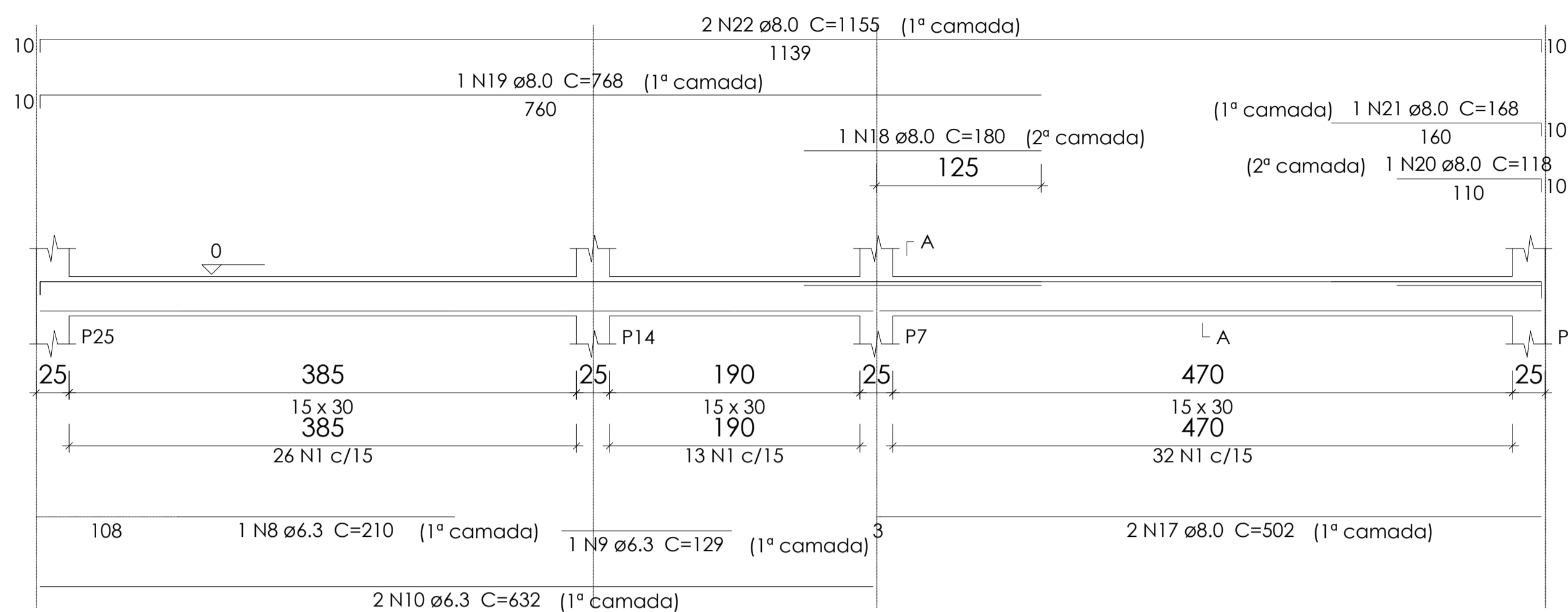
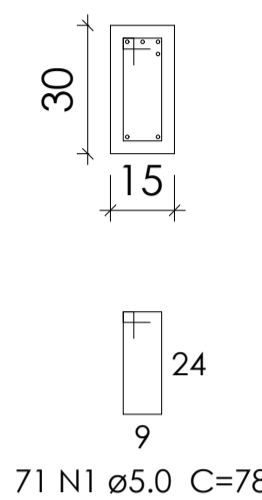


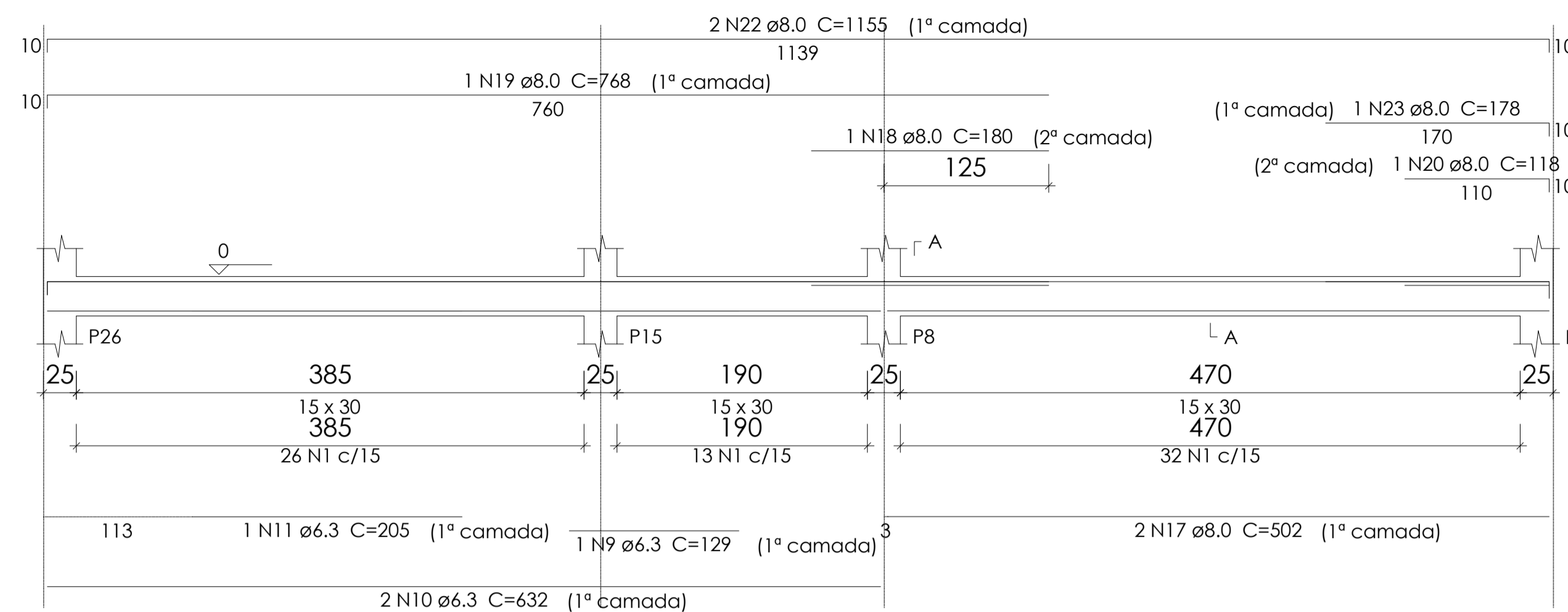
V8
ESC 1:50



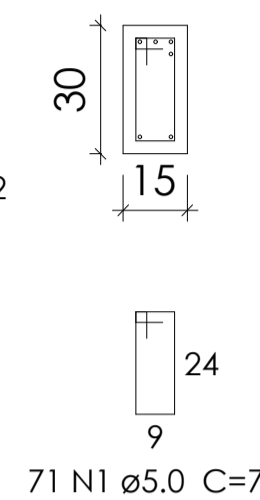
SEÇÃO A-A
ESC 1:25



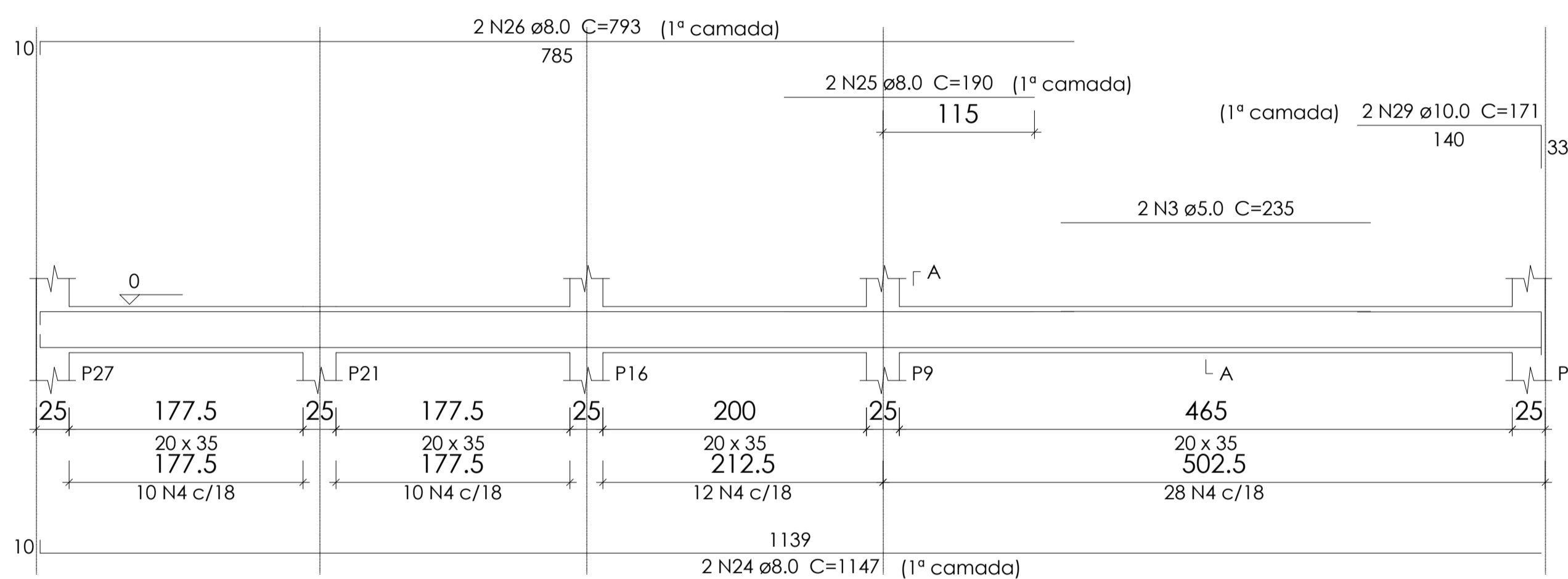
V9
ESC 1:50



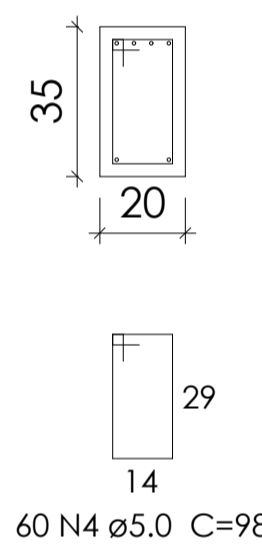
SEÇÃO A-A
ESC 1:25



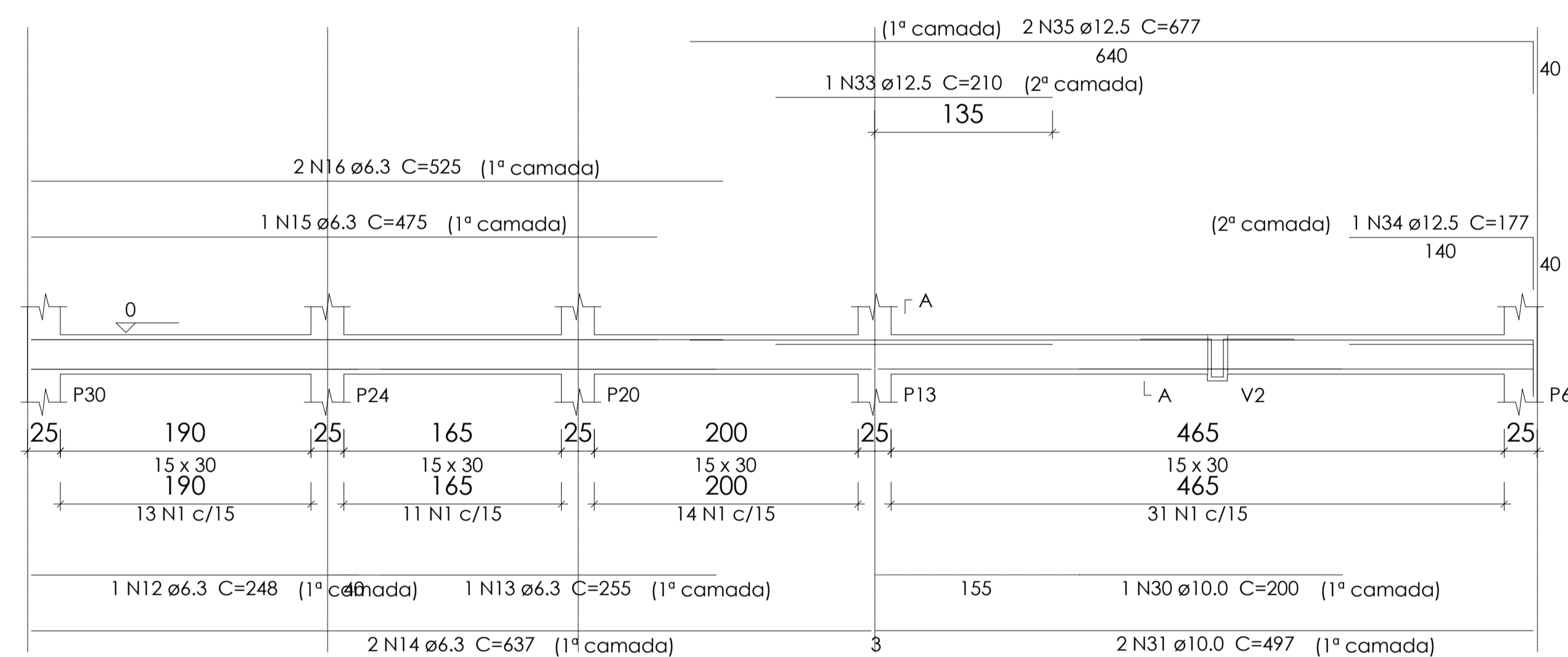
V10
ESC 1:50



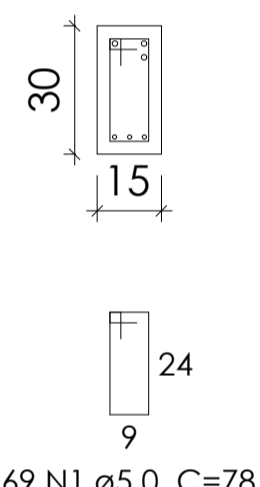
SEÇÃO A-A
ESC 1:25



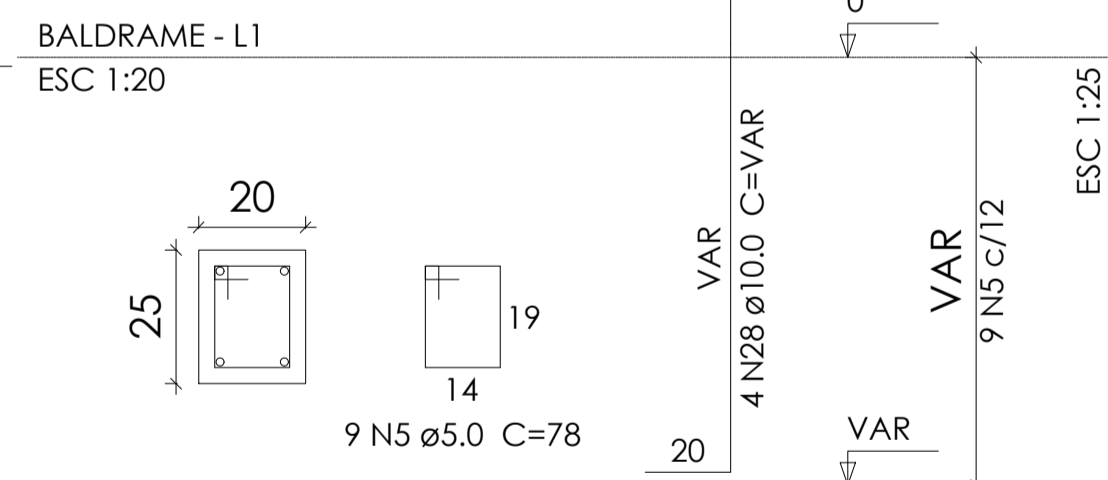
V18
ESC 1:50



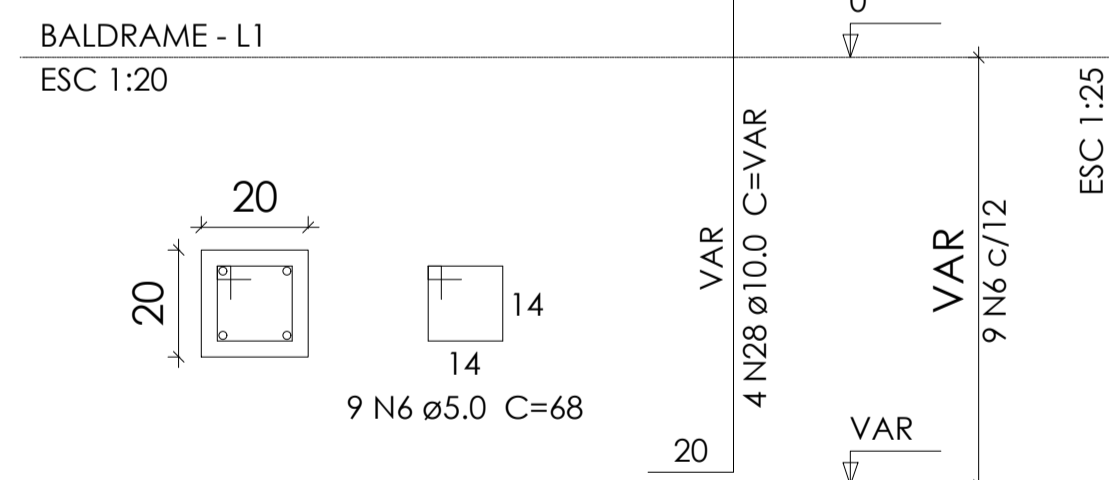
SEÇÃO A-A
ESC 1:25



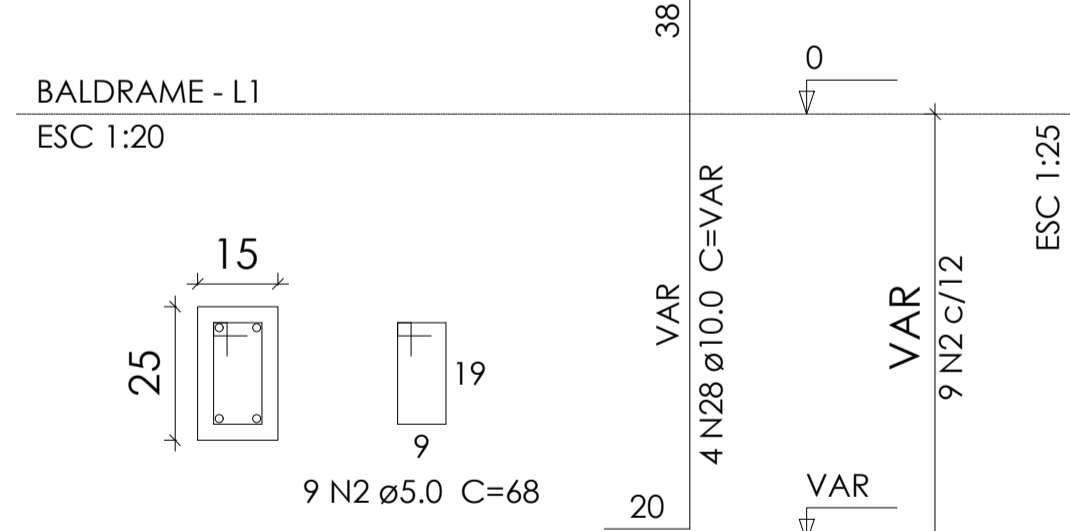
P16=P27



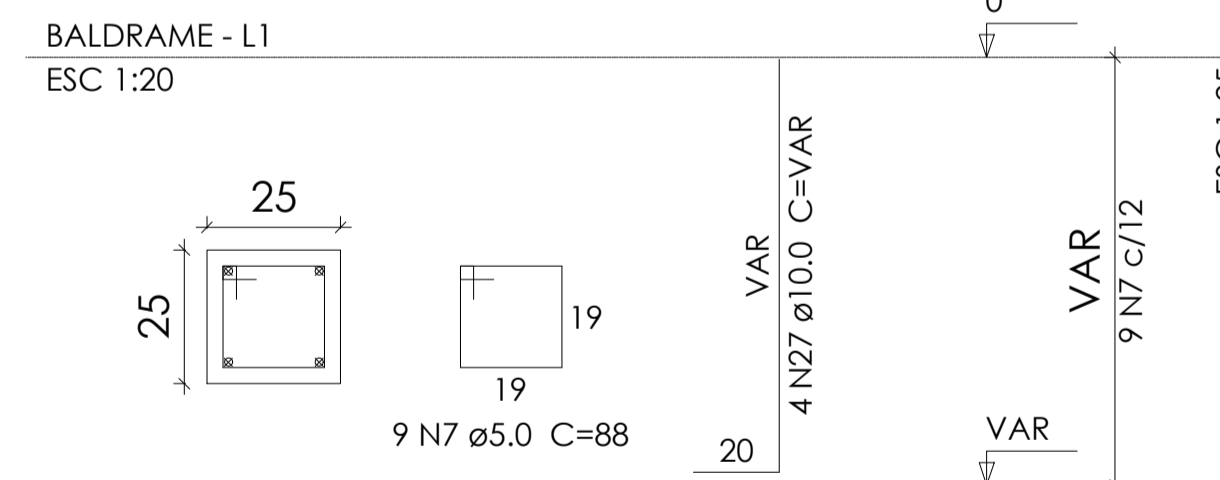
P17=P28



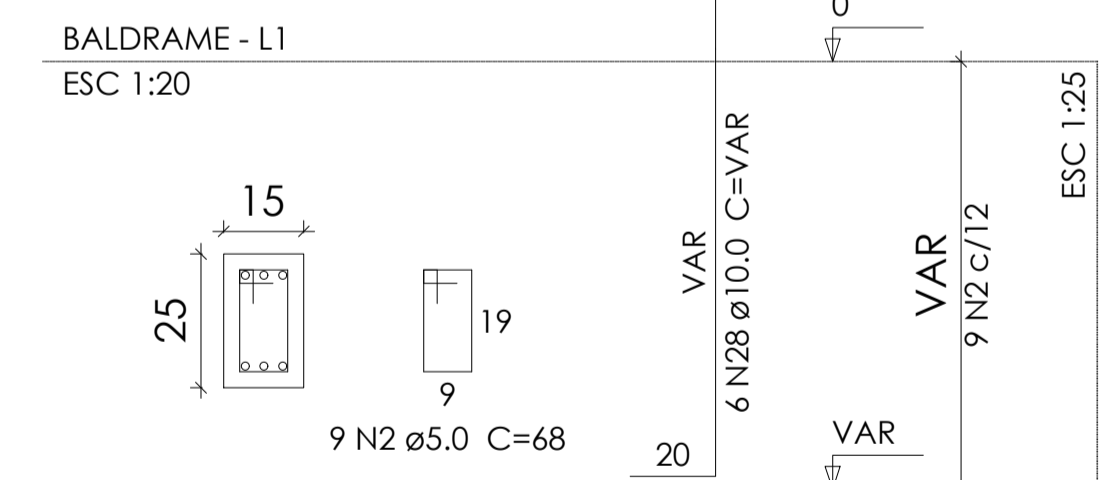
P2=P3=P7=P8=P9=P12=P13=P14=P15=P18=P19
=P20=P23=P24=P25=P26=P29=P30=P31=P32



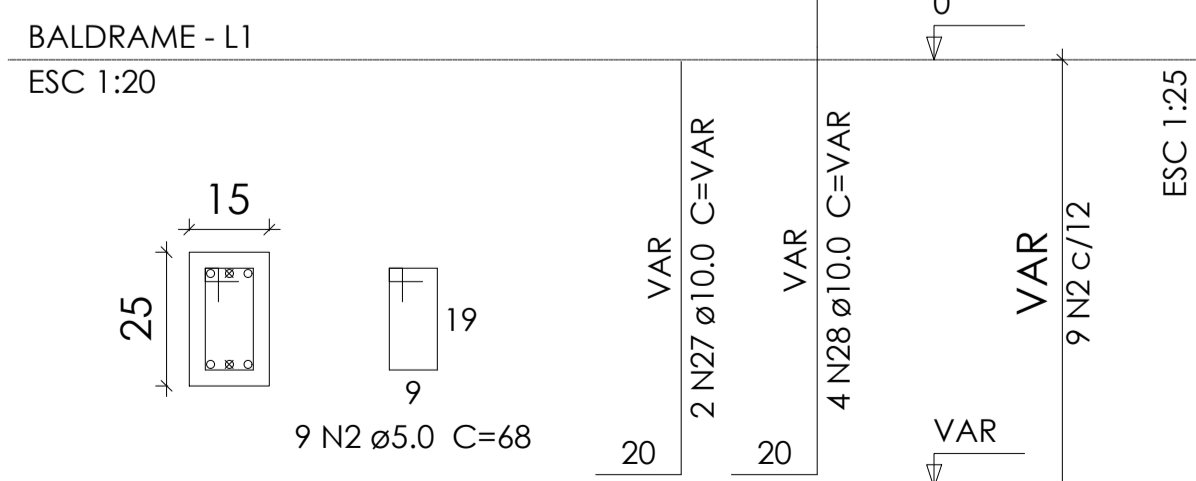
P21=P22



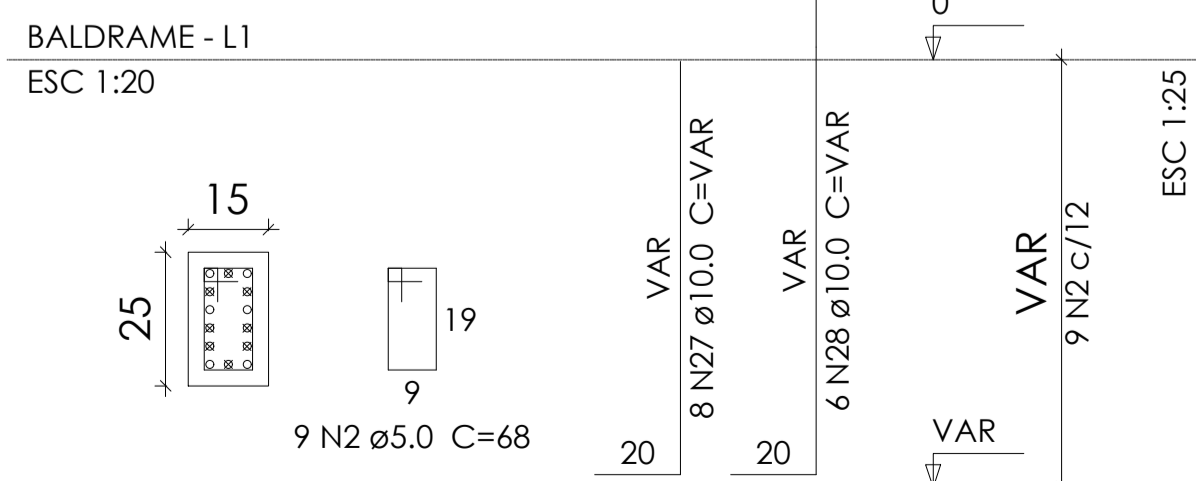
P4=P10



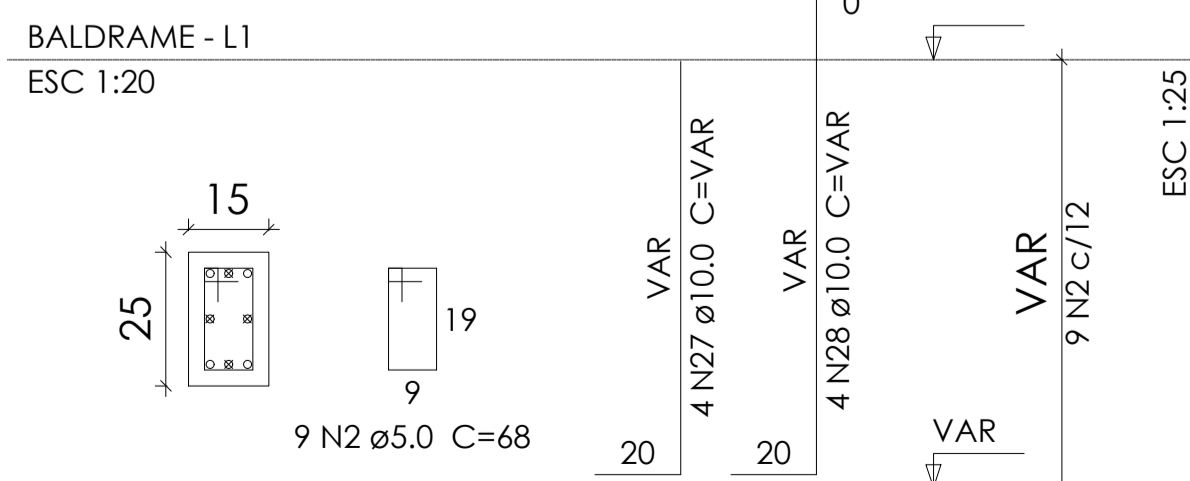
P5



P6



P11



PREFEITURA MUNICIPAL DE
PORTO DOS GAÚCHOS

PROJETO: Construção UDR
ENDEREÇO: Prefeitura Municipal - Praça Leopoldina Wilke
PROPRIETÁRIO: MUNICÍPIO DE PORTO DOS GAÚCHOS

DATA
03/09/2020
FOLHA
Est7-17

RESPONSÁVEL TÉCNICO
EVELIN LUANI MONTAGNA
ENGENHEIRA CIVIL
CREA-MT 03125

PROPRIETÁRIO
PREFEITURA MUNICIPAL DE PORTO
DOS GAÚCHOS
CNPJ: 03.204.187/0001-33