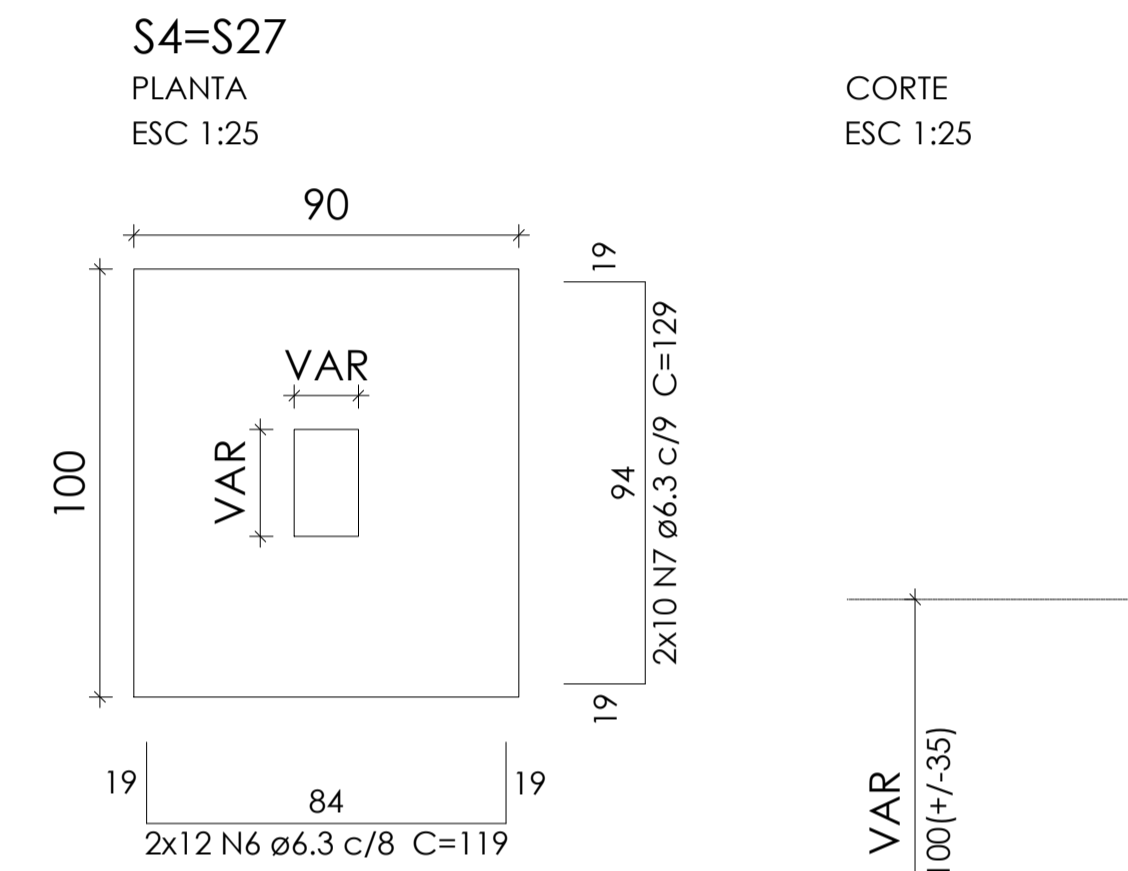
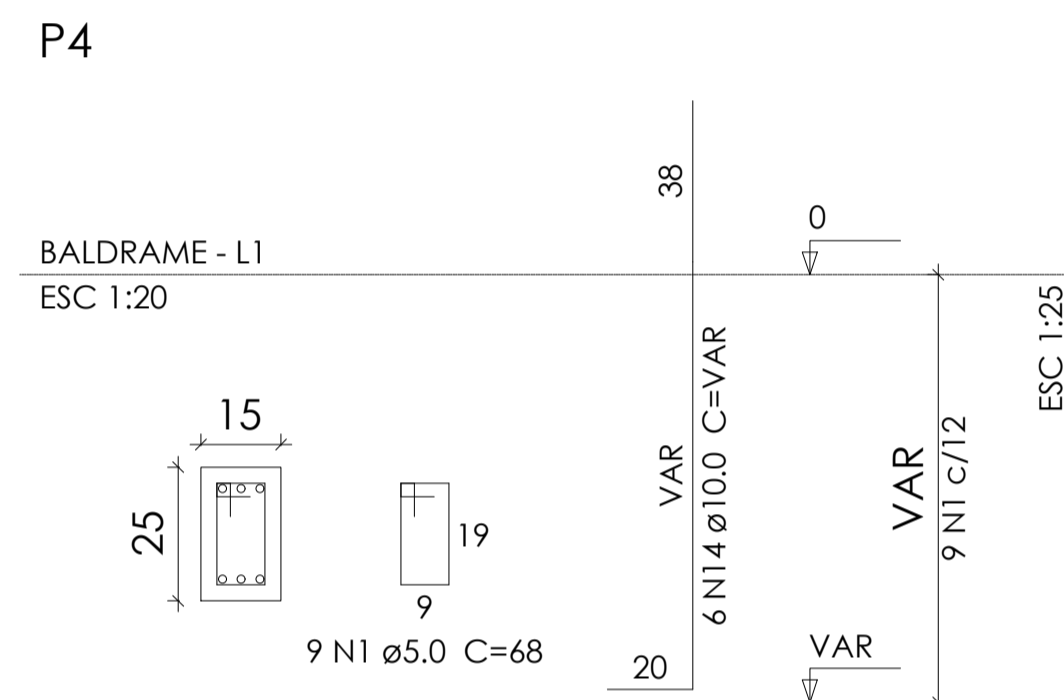
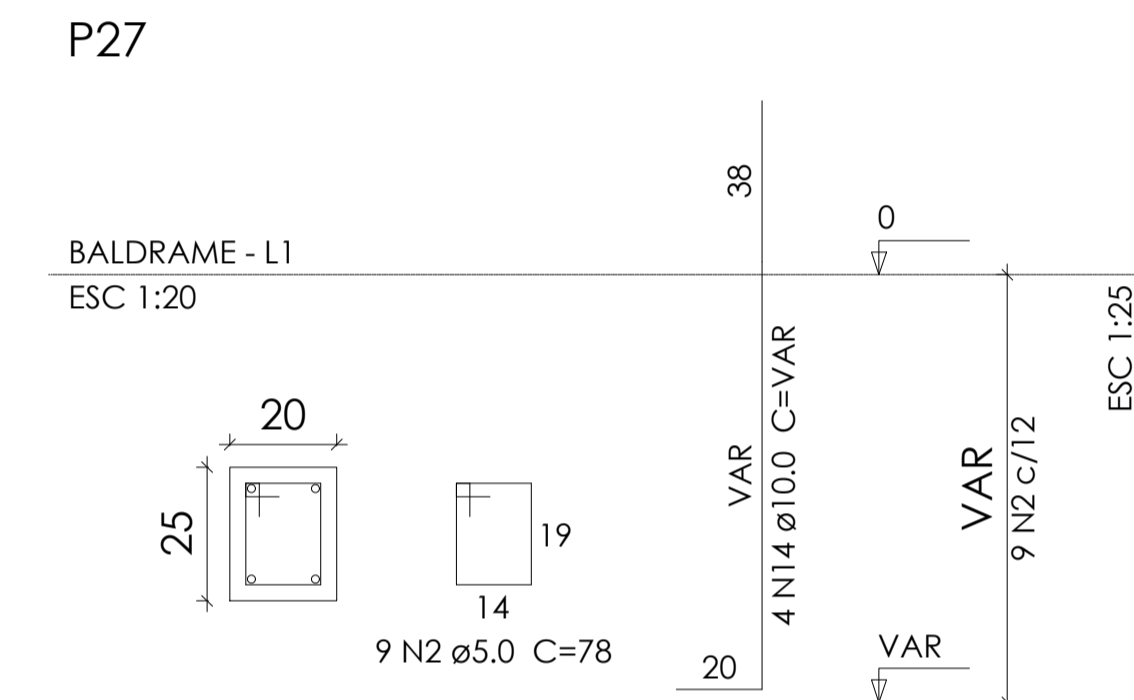
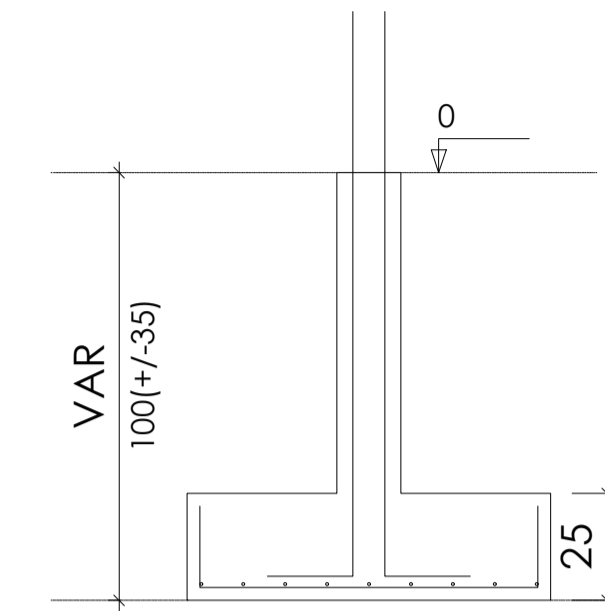


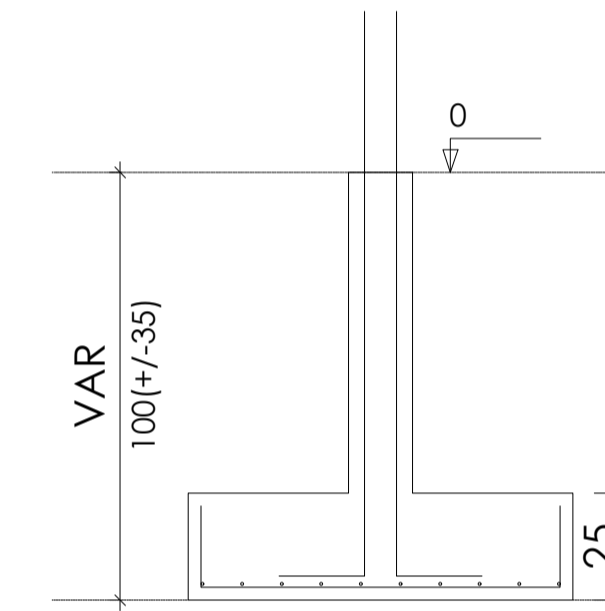
CORTE
ESC 1:25

Solo com capacidade de suporte > 1.50 kgf/cm²
Solo compactado sobre a sapata
peso específico > 1600.00 kgf/m³



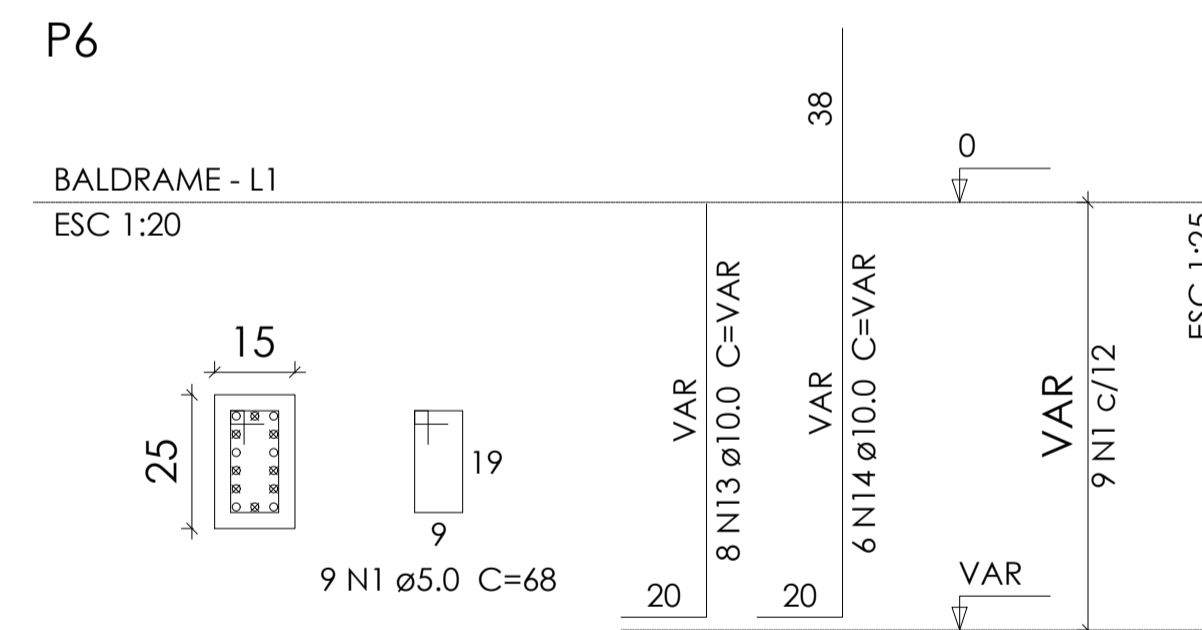
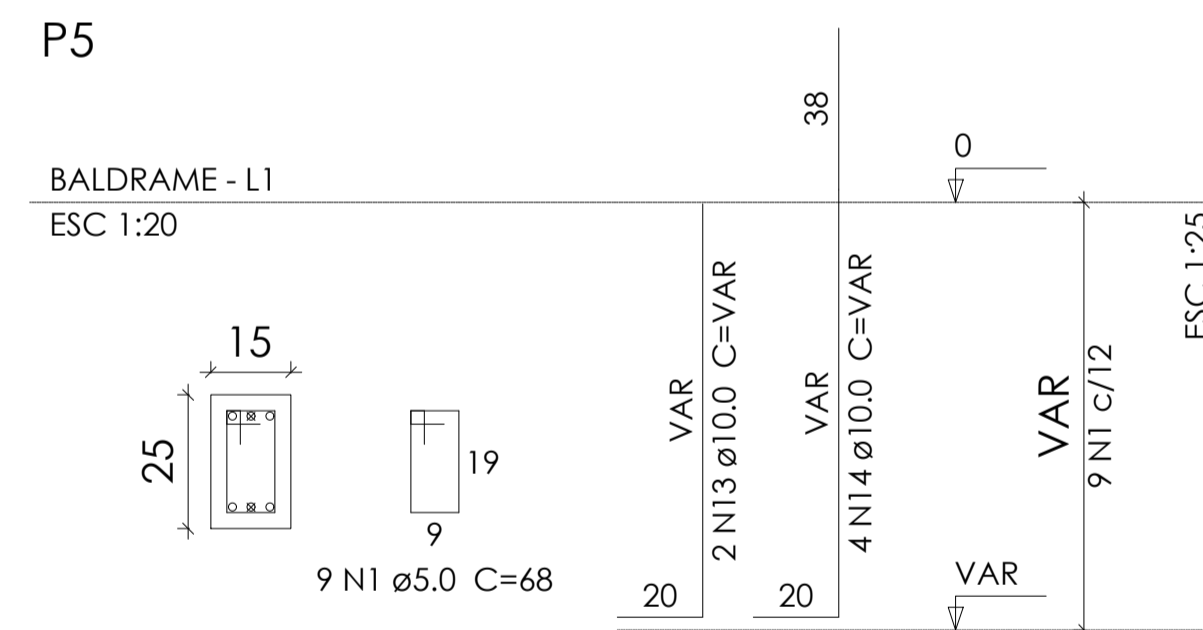
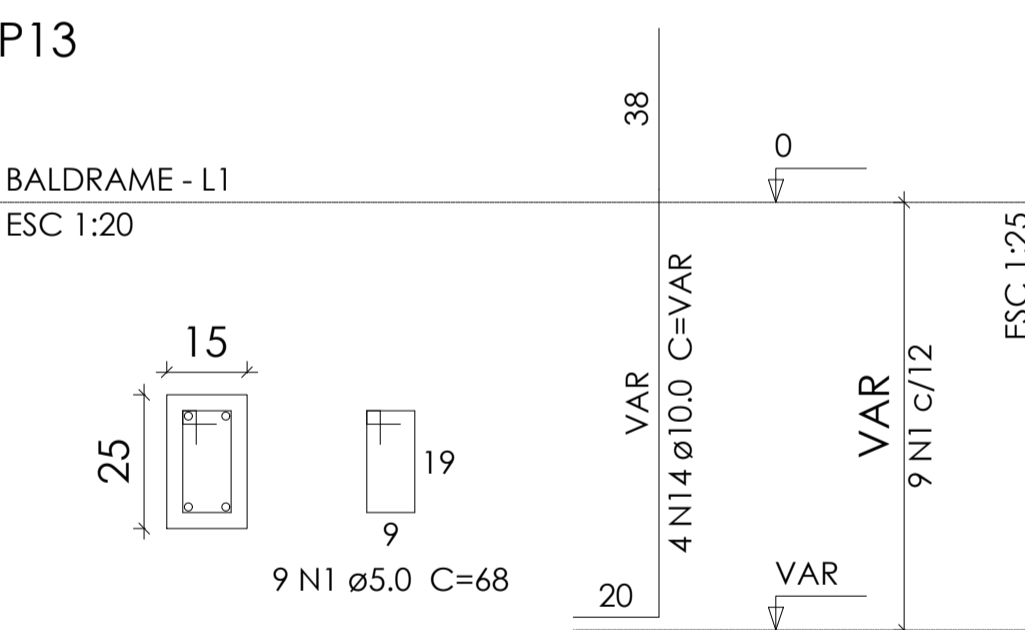
CORTE
ESC 1:25

Solo com capacidade de suporte > 1.50 kgf/cm²
Solo compactado sobre a sapata
peso específico > 1600.00 kgf/m³

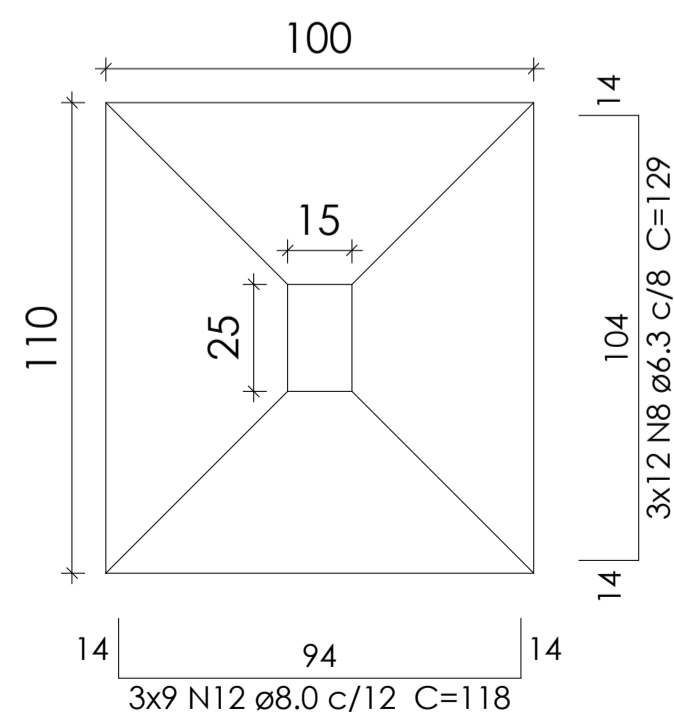


Relação do aço

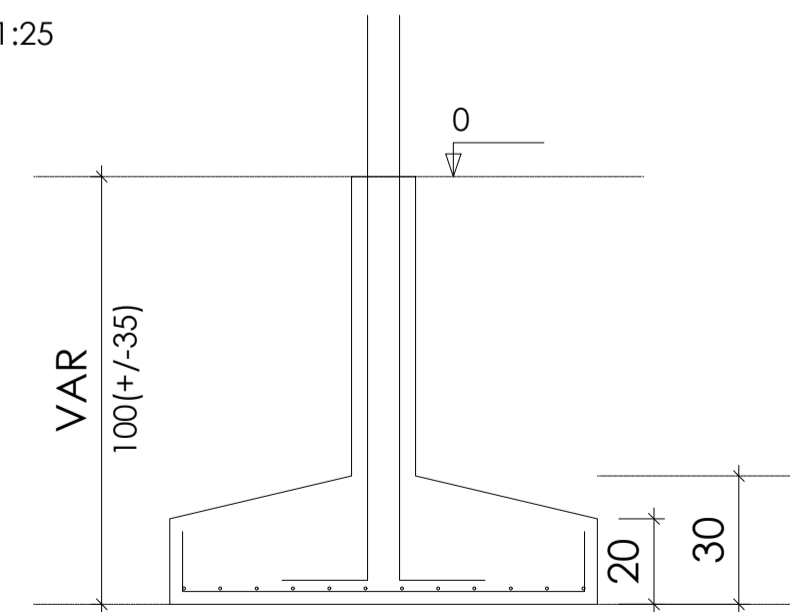
AÇO	N	DIAM	Q	UNIT (cm)	C.TOTAL (cm)
CA60	1	5.0	216	68	14688
	2	5.0	18	78	1404
	3	5.0	9	68	612
CA50	4	6.3	164	114	18696
	5	6.3	81	124	10044
	6	6.3	24	119	2856
	7	6.3	20	129	2580
	8	6.3	36	129	4644
	9	6.3	24	94	2256
	10	6.3	84	104	8736
	11	6.3	18	109	1962
	12	8.0	27	118	3186
	13	10.0	16	VAR	VAR
	14	10.0	114	VAR	VAR
	15	10.0	13	152	1976
	16	10.0	10	162	1620



S5=S6=S13
PLANTA
ESC 1:25



CORTE
ESC 1:25



S12=S18=S20
PLANTA
ESC 1:25

CORTE
ESC 1:25

Solo com capacidade de suporte > 1.50 kgf/cm²
Solo compactado sobre a sapata
peso específico > 1600.00 kgf/m³

Resumo do aço

AÇO	DIAM	C.TOTAL (m)	PESO + 10 % (kg)
CA50	6.3	517.8	139.4
	8.0	31.9	13.8
	10.0	232.2	157.5
CA60	5.0	167.1	28.3
PESO TOTAL			
CA50	310.7		
CA60	28.3		

Vol. de concreto total (C-25) = 6.46 m³
Área de forma total = 44.79 m²



PREFEITURA MUNICIPAL DE PORTO DOS GAÚCHOS

PROJETO: Construção UDR		DATA 03/09/2020
ENDEREÇO: Prefeitura Municipal - Praça Leopoldina Wilke		FOLHA
PROPRIETÁRIO: MUNICÍPIO DE PORTO DOS GAÚCHOS		Est2-17
RESPONSÁVEL TÉCNICO EVELIN LUANI MONTAGNA ENGENHEIRA CIVIL CREA-MT 03125		PROPRIETÁRIO PREFEITURA MUNICIPAL DE PORTO DOS GAÚCHOS CNPJ: 03.204.187/0001-33