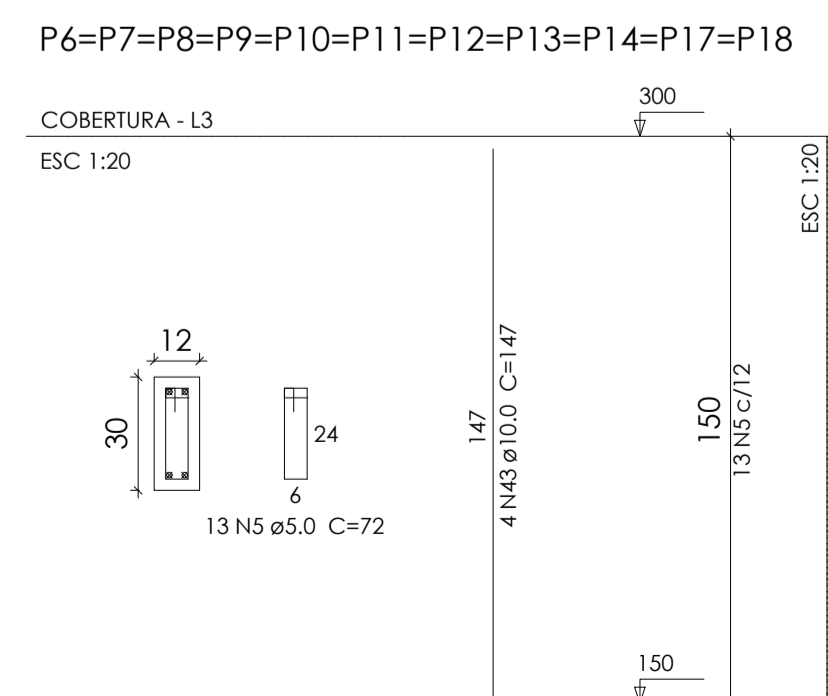
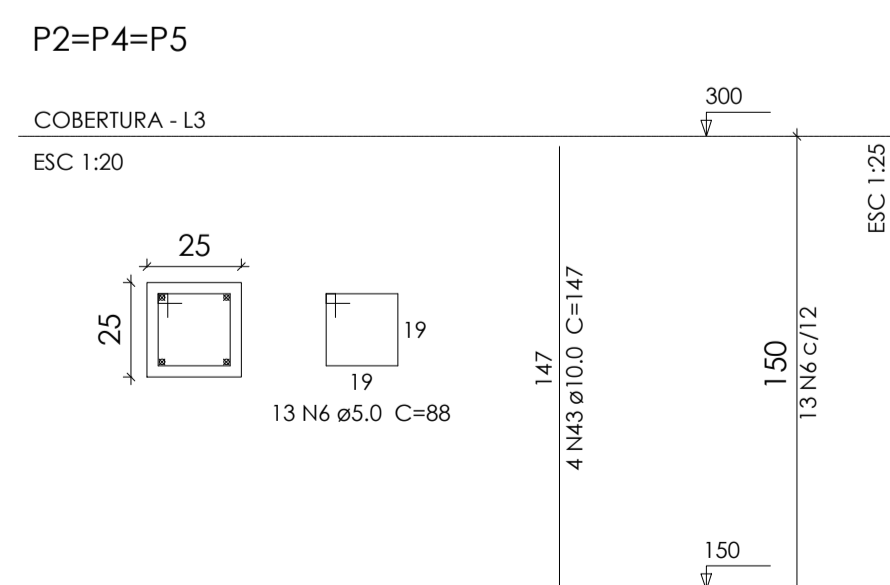
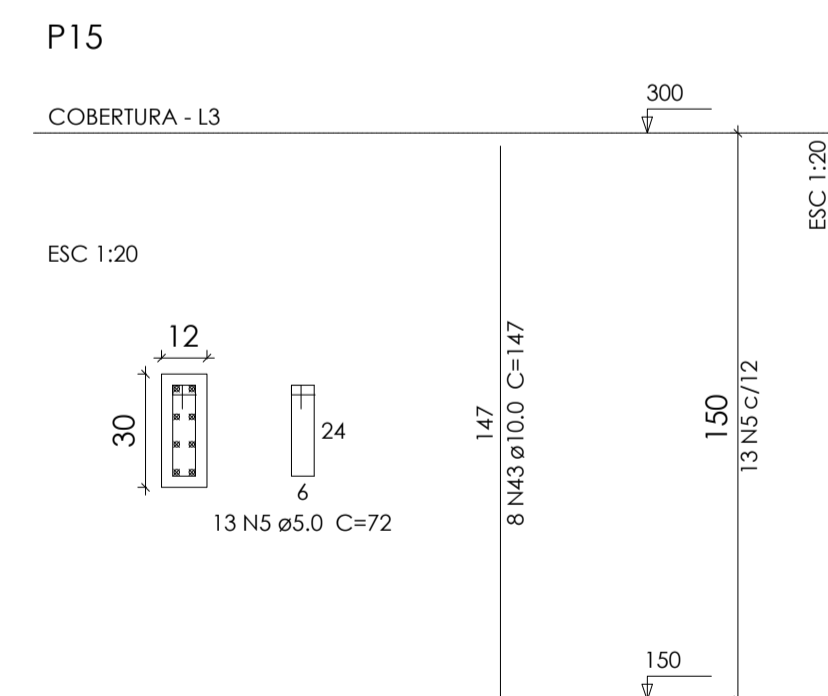
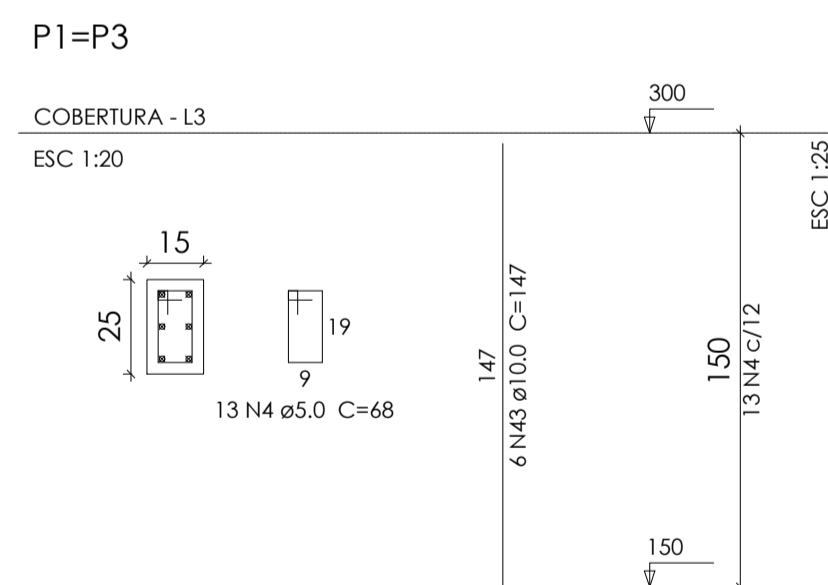
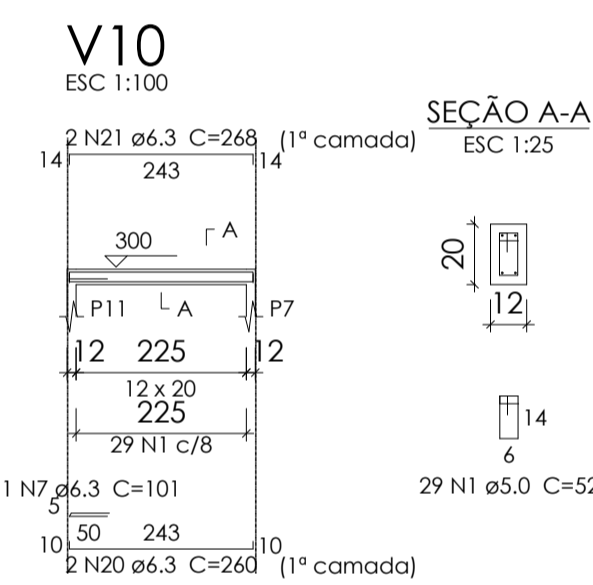
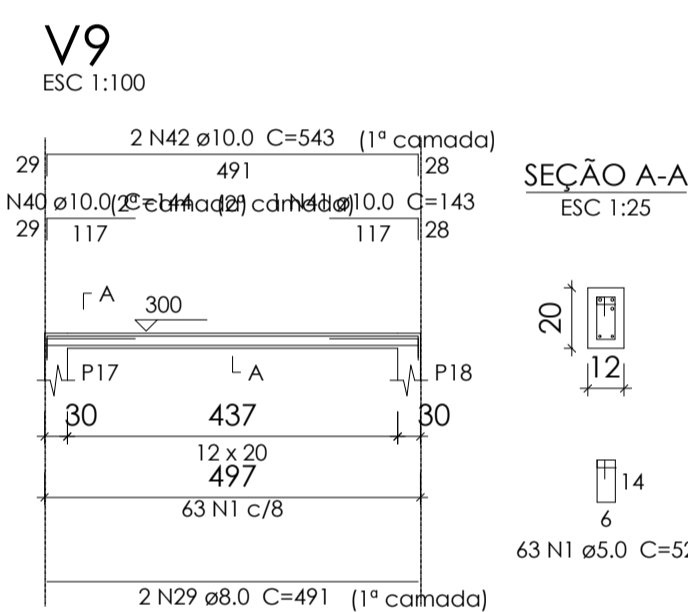
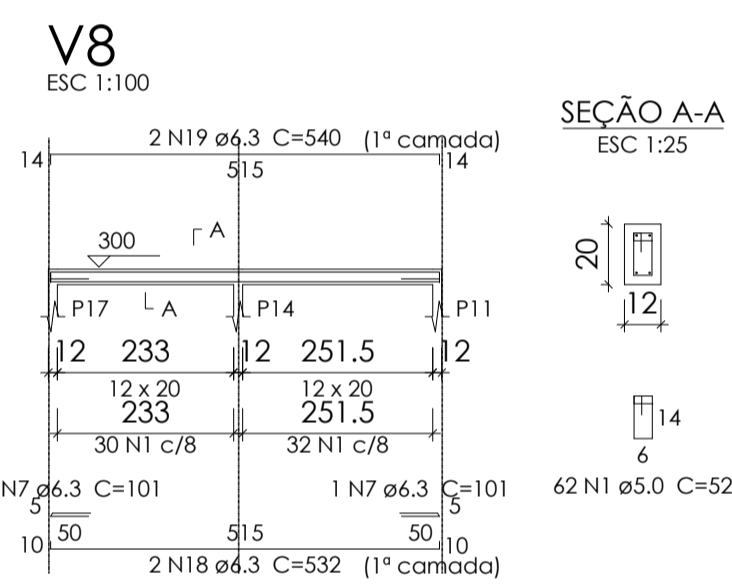
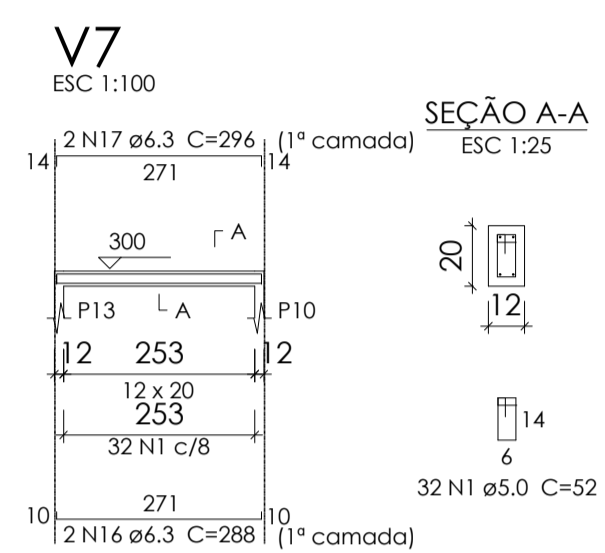
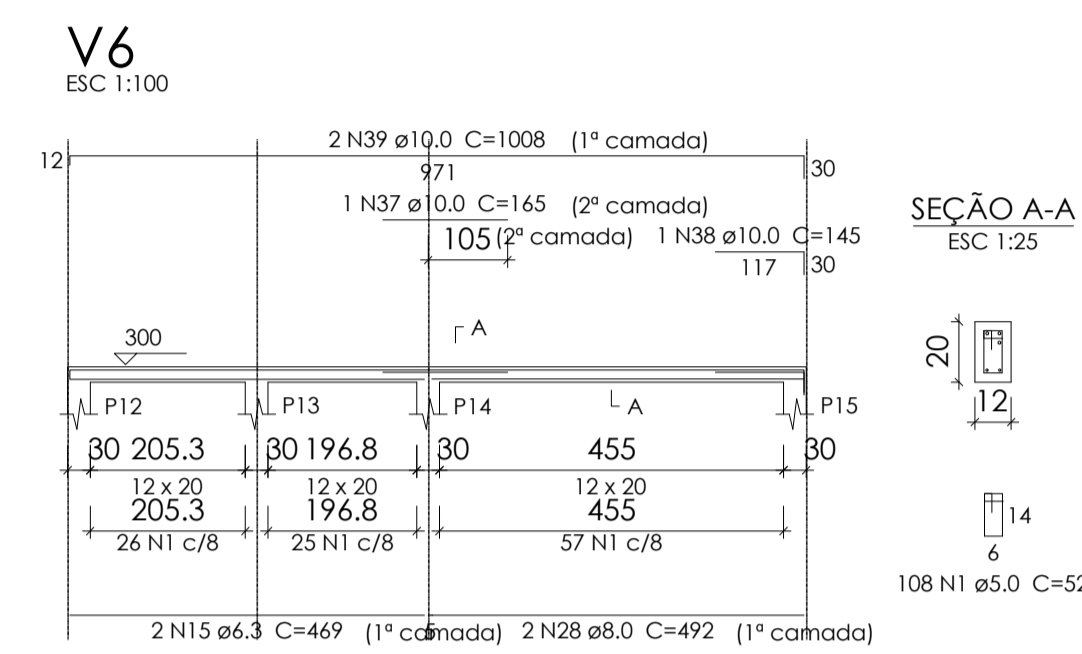
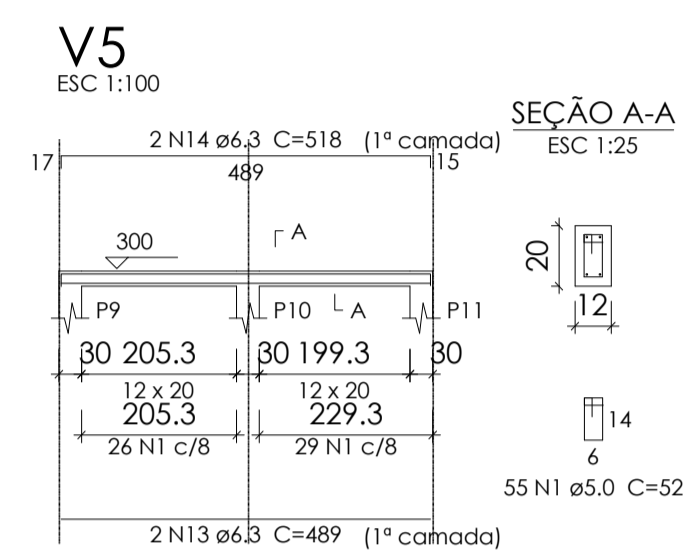
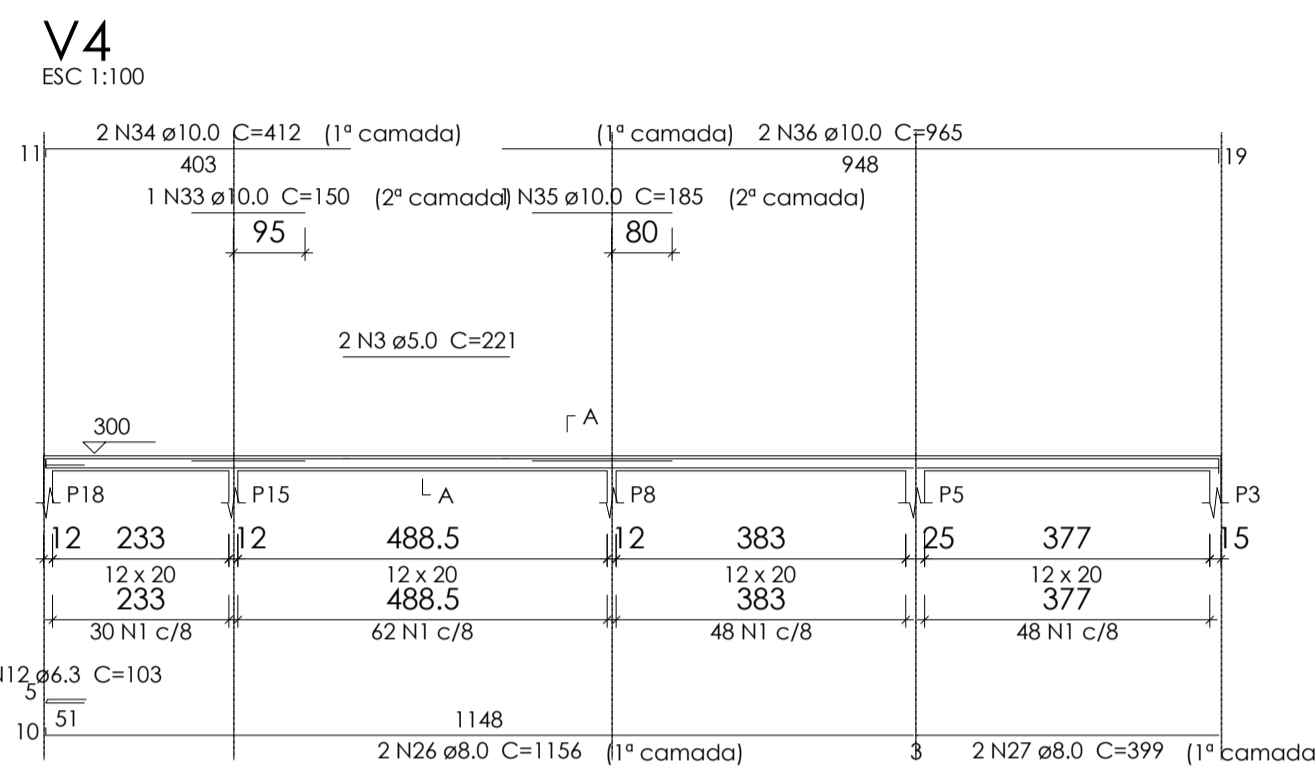
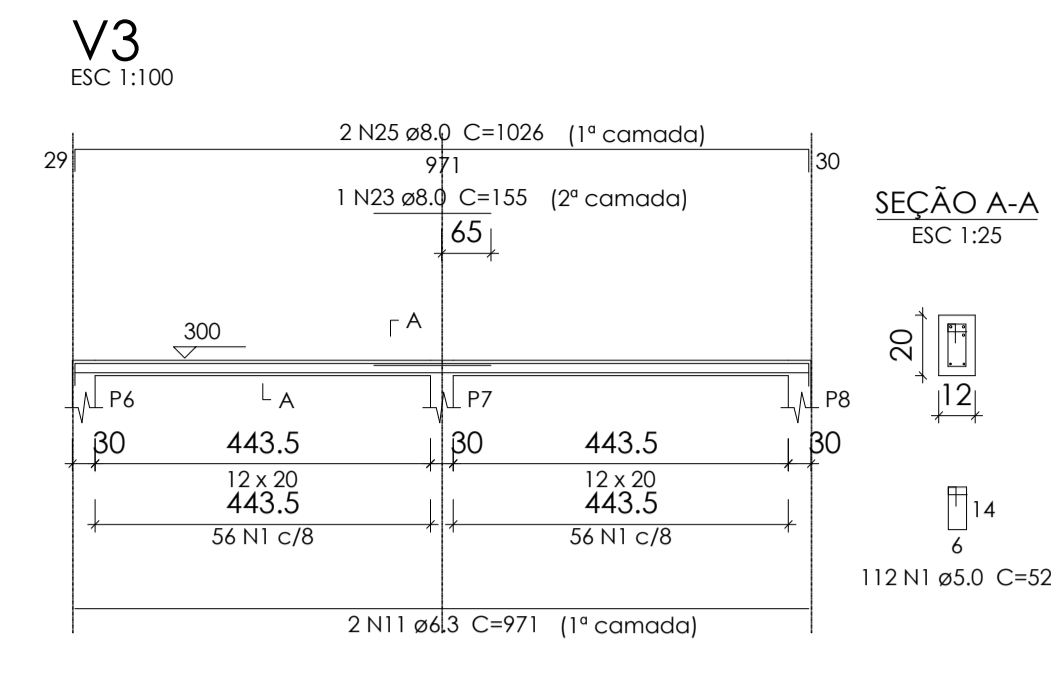
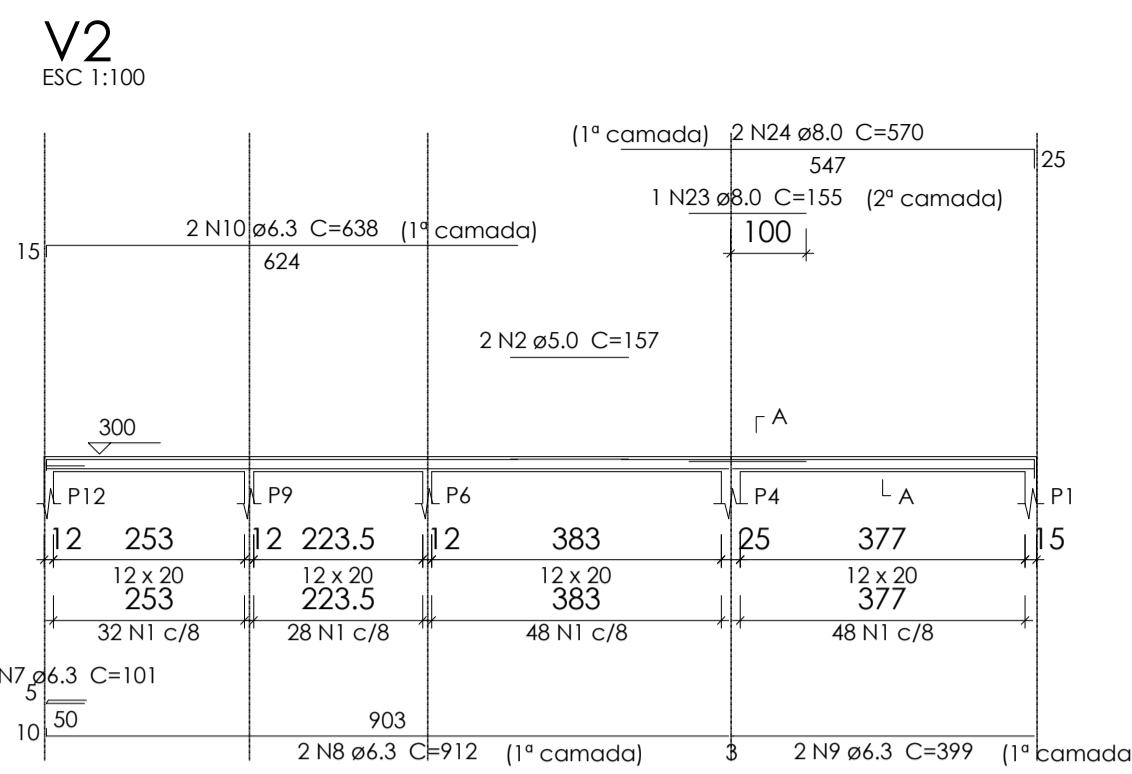
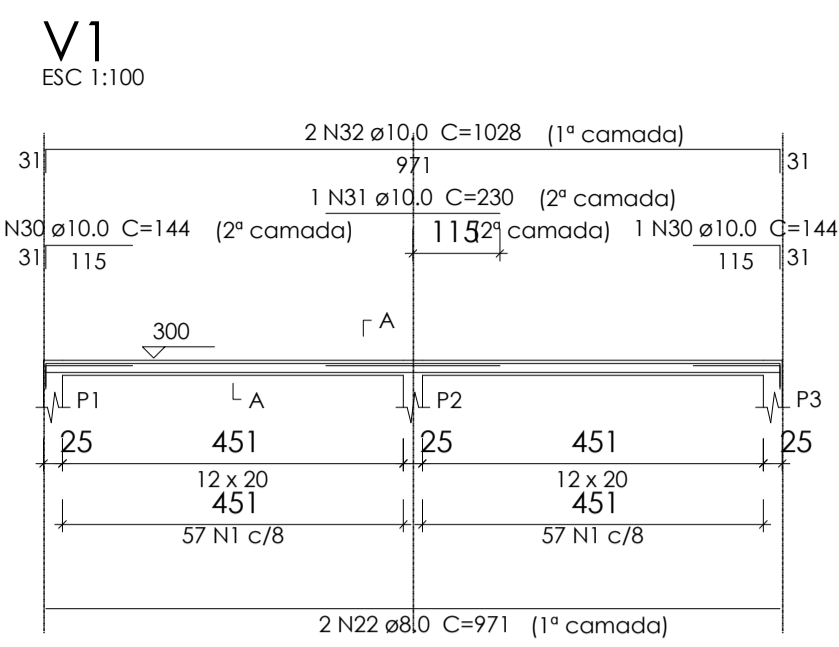
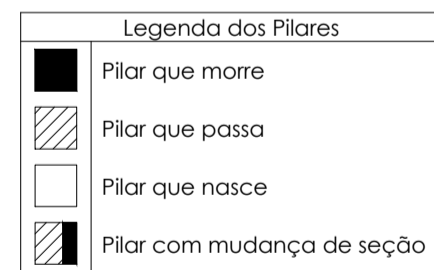


Forma do pavimento Cobertura
escala 1:50

Pilares		
Nome	Seção (cm)	Elevação (cm)
P1	15 x 25	0
P2	25 x 25	0
P3	15 x 25	0
P4	25 x 25	0
P5	25 x 25	0
P6	12 x 30	0
P7	12 x 30	0
P8	12 x 30	0
P9	12 x 30	0
P10	12 x 30	0
P11	12 x 30	0
P12	12 x 30	0
P13	12 x 30	0
P14	12 x 30	0
P15	12 x 30	0
P17	12 x 30	0
P18	12 x 30	0

Vigas			
Nome	Seção (cm)	Elevação (cm)	Nível (cm)
V1	12x20	0	300
V2	12x20	0	300
V3	12x20	0	300
V4	12x20	0	300
V5	12x20	0	300
V6	12x20	0	300
V7	12x20	0	300
V8	12x20	0	300
V9	12x20	0	300
V10	12x20	0	300

Características dos materiais		
	f _{ck} (kgf/cm ²)	E _{cs} (kgf/cm ²)
	250	238000



Relação do aço

AÇO	N	DIAM	Q	UNIT (cm)	C.TOTAL (cm)
CA60	1	5.0	919	52	47788
CA50	2	5.0	2	157	314
CA50	3	5.0	2	221	442
CA50	4	5.0	26	48	1748
CA50	5	5.0	156	72	11232
CA50	6	5.0	39	88	3432
CA50	7	6.3	4	101	404
CA50	8	6.3	2	912	1824
CA50	9	6.3	2	399	798
CA50	10	6.3	2	438	1274
CA50	11	6.3	2	971	1942
CA50	12	6.3	1	103	103
CA50	13	6.3	2	489	978
CA50	14	6.3	2	518	1036
CA50	15	6.3	2	469	938
CA50	16	6.3	2	288	576
CA50	17	6.3	2	296	592
CA50	18	6.3	2	532	1064
CA50	19	6.3	2	540	1080
CA50	20	6.3	2	260	520
CA50	21	6.3	2	268	536
CA50	22	8.0	2	971	1942
CA50	23	8.0	2	155	310
CA50	24	8.0	2	570	1140
CA50	25	8.0	2	1026	2052
CA50	26	8.0	2	1156	2312
CA50	27	8.0	2	399	798
CA50	28	8.0	2	492	984
CA50	29	8.0	2	491	982
CA50	30	10.0	2	144	288
CA50	31	10.0	1	230	230
CA50	32	10.0	2	1028	2056
CA50	33	10.0	1	150	150
CA50	34	10.0	2	412	824
CA50	35	10.0	1	185	185
CA50	36	10.0	2	965	1930
CA50	37	10.0	1	165	165
CA50	38	10.0	1	145	145
CA50	39	10.0	2	1008	2016
CA50	40	10.0	1	144	144
CA50	41	10.0	1	143	143
CA50	42	10.0	2	543	1086
CA50	43	10.0	76	147	11172

Resumo do aço

AÇO	DIAM	C.TOTAL (m)	PESO + 10% (kg)
CA50	6.3	136.7	36.8
CA50	8.0	105.2	45.7
CA50	10.0	205.4	139.3
CA50	5.0	649.8	110.2
PESO TOTAL			
CA50	221.7		
CA60	110.2		

Vol. de concreto total (C-25) = 2,92 m³
Área de forma total = 62,78 m²

Construção de Cozinha e Refeitório

TÍTULO:

Construção de Cozinha e Refeitório

PROJETO:

ESTRUTURAL

FOLHA:

04/04

PROPRIETÁRIO(A):

Prefeitura Municipal de Porto dos Gaúchos

CPF / CNPJ:

03.204.187/0001-33

ENDEREÇO DA OBRA:

Praça Leopoldina Wilke, Porto dos Gaúchos - MT

TELEFONE:

(66) 3526-2011

TIPO DA OBRA:

Construção de Cozinha e Refeitório

ASSINATURAS:

RESPONSÁVEL TÉCNICO:

EVELIN LUANI MONTAGNA
CREAM-MT 039125

PROPRIETÁRIO:

PREFEITURA MUNICIPAL DE PORTO DOS GAÚCHOS
CNPJ: 03.204.187/0001-33

APROVAÇÃO: